



Minnesota Mississippi River Parkway Commission
2nd Quarter Meeting
May 30, 2019 • 2:30 – 5:00 p.m.
State Office Building – Basement Hearing Room
DRAFT AGENDA

2:30 p.m.	Welcome & Introductions	Pierson
2:35 p.m.	Approve Today's Agenda & Minutes from 2/28/19	Pierson/All
2:40 p.m.	Informational Presentations <ul style="list-style-type: none">- City of Brainerd Riverfront Initiatives- Hubbard County Bicycle Trails Project – Headwaters RDC	Cassandra Torstenson Bryan McCoy
3:10 p.m.	Commission Business <ul style="list-style-type: none">- Budget Status Report- Legislative Updates- Executive Committee Election- Lake Itasca to Grand Rapids Vacancy & Plan	Handout/Lewis/Miller LCC/Legislative Members All Miller
3:30 p.m.	National MRPC <ul style="list-style-type: none">- 2019 Semi Annual Meeting, Clarksdale, MS- Relay of Voices- Committee Updates	Attendees Handout/All Committee Members
3:45 p.m.	Commission Projects <ul style="list-style-type: none">- Plan Your Project Mapping Update- Ambassador Development	Zoff Zoff/Miller
3:50 p.m.	Old Business <ul style="list-style-type: none">- USACE Minneapolis Lock Disposition Study- Review MN-MPRC Process for Letters of Support, etc.	Pierson/Anfinson All
4:00 p.m.	New Business <ul style="list-style-type: none">- Book release and art collection – American Eagle: A Visual History of our National Emblem- USACE Upper Mississippi River Master Plan- Preliminary Discussion on New Agency Leadership/New Member Orientation to MN-MRPC	Mulry All All
4:20 p.m.	Letter/Action Requests <ul style="list-style-type: none">- Nokasippi River Area Gravel Mining Proposal – Comment Ltr	All
4:30 p.m.	Commission Member Updates <ul style="list-style-type: none">- At Large- Grand Rapids to Brainerd- Brainerd to Elk River- Elk River to Hastings- Hastings to Iowa Border- Agriculture- Historical Society- Natural Resources- Transportation- National Park Service/MISS	Lewis Christianson Samp Pierson Mulry Huginin Kelliher Parker/Bonsignore Bradley/Zoff Anfinson
5:00 p.m.	Wrap Up and Adjourn	



**Minnesota Mississippi River Parkway Commission
1st Quarter Meeting – February 28, 2019
State Office Building, St. Paul MN
MINUTES – Draft**

Commissioners Present

Nancy Salminen – Lake Itasca to Grand Rapids
Megan Christianson – Grand Rapids to Brainerd
Cordelia Pierson – Elk River to Hastings
Sen. David Senjem
Sen. Patricia Torres Ray
Rep. Anne Claflin
Lisa Havelka – Tourism (phone)
Scott Bradley - Transportation
Anne Lewis – At Large (phone)

Technical Advisors/Staff Present

Carol Zoff – Transportation
John Anfinson - NPS
Gina Bonsignore – Natural Resources

David Kelliher – Historical Society
Diane Henry-Wangenstein – LCC
Chris Miller – Staff

Commissioners/Technical Advisors Absent

Karl Samp – Brainerd to Elk River
Sheronne Mulry – Hastings to Iowa Border
Keith Parker – Natural Resources Appointee
Paul Hugunin – Agriculture Appointee
Rep. Tony Jurgens

Speakers Present

Mike Rogers, Ramsey County

Meeting called to order at 2:35 p.m. by Vice Chair Pierson followed by introductions. A quorum was present after the informational presentation

Informational Presentation – Riverview Corridor Project: Mike Rogers of Ramsey County was welcomed and shared information about the Riverview Corridor Project. The Riverview Corridor Study Area is approximately 12 miles long; connects major destinations, neighborhoods and job concentrations; serves a growing and diverse population and employment areas, and provides regional and local connectivity. The study started in 2014 and examined 60 alternatives. 100 events have been held with 4,600 people engaged. The locally preferred alternative is a modern streetcar line, 11.7 miles and 20 stations. A Mississippi River crossing would be made in the Fort Snelling area (Historic Fort Snelling is a National Great River Road Interpretive Center). The Great River Road is on Highway 55 in the area which would likely intersect with the new line. Next steps include environmental review which is likely to be a 3 – 5 year process and will include determining how to cross Fort Snelling and consultation with Dakota nations. Commission member discussion followed including questions on how the MN-MRPC can have meaningful impact as the project moves forward. It was noted that input during the next three years would be most helpful. Members expressed thanks for the information presented and look forward to continued involvement.

Approve Today's Agenda and Minutes from 11/29/18: Motion by Sen. Senjem and seconded by Scott Bradley to approve the agenda and minutes. Motion carried with all voting in favor – Salminen, Pierson, Senjem, Torres Ray, Claflin, Lewis, Havelka, Bradley.

Officer Election: Chris Miller announced the election of officers and called for nominations for Chair, Vice Chair and Treasurer of the Minnesota Mississippi River Parkway Commission. (Statute defines that the At-Large Member of the MN-MRPC serves as Secretary.)

Motion by Anne Lewis and seconded by Scott Bradley to nominate Sen. Senjem for the position of Chair. No other nominations were noted. Motion carried with all voting in favor - Salminen, Pierson, Senjem, Torres Ray, Claflin, Lewis, Havelka, Bradley.

Motion by Rep. Claflin and seconded by Sen. Torres Ray to nominate Cordelia Pierson for the position of Vice Chair. No other nominations were noted. Motion carried with all voting in favor - Salminen, Pierson, Senjem, Torres Ray, Claflin, Lewis, Havelka, Bradley.

Motion by Cordelia Pierson and seconded by Megan Christianson to nominate Anne Lewis for the position of Treasurer. No other nominations were noted. Motion carried with all voting in favor - Salminen, Pierson, Senjem, Torres Ray, Claflin, Lewis, Havelka, Bradley. As At- Large Member, Lewis also serves as Secretary.

Budget Status Report: Anne Lewis provided an overview of the budget included in the meeting packet.

Executive Committee Report/Legislative Update: The Committee met on December 12. Notes in the meeting packet were referenced along with a summary of budget requests. Much of the Committee's discussion focused on MN-MRPC activity for the 2019 legislative session including a general information campaign, housekeeping bill and requests for both one time project funds and an ongoing increase to the operating budget to implement the Corridor Management Plan. MN-MRPC/Great River Road information packets were developed to share with legislators and can also be used for other applications. MN-MRPC public members have been asked to make contacts with legislators in their areas to share information. Thank you to all who have assisted with this and also volunteered to serve as speakers at hearings. Special thanks were noted to authors of the housekeeping bills – HF 1723 (Reps. Claflin and Jurgens) and SF 1268 (Sens. Senjem and Torres Ray). Funding requests will be considered by the Legislative Coordinating Commission for possible inclusion in their overall request.

2019 MRPC Semi-Annual Meeting – April 2 – 4, Clarkdale, Mississippi: Sheronne Mulry has been approved to attend to represent the MN-MRPC. Karl Samp and Anne Lewis will also be attending, as MRPC Executive Board Members. The next opportunity will be the MRPC Annual Meeting, Sept. 17 – 19 in La Crosse, and the group was also reminded that Minnesota will be hosting the MRPC 2020 Annual Meeting, Sept. 14 – 16 in Bemidji, where the Mississippi River Cities and Towns Initiative (MRCTI) will also be meeting. Sen. Senjem reported on his involvement with the National Council of Environmental Legislators and their joint meetings with MRCTI, and raised a question about partnering with the MRPC as well. Anne Lewis offered to assist with preliminary exploration of this partnership with/communication between organizations where there are common interests and issues.

MRPC Committee Reports: Anne Lewis reported on upcoming promotions planned by the MRPC Marketing Committee – Culinary/Flavors focus in spring, an ongoing Pilot's Wheel branding campaign, and Drive the Great River Road Month in September. Megan Christianson noted that local MN GRR communities will be launching their spring campaigns very soon.

Plan Your Trip Mapping/Regional Travel Guides/Print Map Update: Carol Zoff reported that Boxuan Xia has completed his graduate program at the University of Minnesota and commented on his significant accomplishments while working at MnDOT – the Great River Road Plan Your Trip online tool, six regional travel guides and a draft design for a print map. The hiring process is underway to fill the position with another graduate student with a potential start date of mid-April. Thanks were noted to the Minnesota Department of Agriculture for the upcoming new list of 2019 of Minnesota Grown sites along the Great River Road.

Consider Revised MN GRR Logo Use Policy: Edits were made to the draft policy based on suggestions from last meeting. There was discussion on further definition/logo formatting possibly needed for use in social media and placing over photographs; how to make the logo easily available online; encouraging use by Convention & Visitors Bureaus/Chambers in Great River Road communities; and overall promotion. Lisa Havelka and Megan Christianson offered to assist.

Review MN-MRPC Process for Project Comments, Letters of Support, or Related Action: The Commission's current process was included in the meeting packet. Members were asked to review for suggested changes/updates to be considered at the next meeting. One suggestion was to ask for a draft letter of support/comment from those making requests.

Consider Lady Slipper Scenic Byway Letter of Support Request: The Lady Slipper Scenic Byway Board requested a general letter of support as they continue to seek funds for a bicycle/pedestrian bridge over the Mississippi River. \$277,000 in Transportation Alternatives funding has been awarded but will require local match. Motion by Meg Christianson and seconded by Scott Bradley to authorize a general

letter of support for the Lady Slipper Scenic Byway Bicycle/Pedestrian Bridge Project. Motion carried with all voting in favor – Salminen, Christianson, Pierson, Senjem, Torres Ray, Claflin, Lewis, Havelka, Bradley.

Consider City of Brooklyn Park Letter of Support Request: The City of Brooklyn Park requested a letter of support as they submit an application for an Outdoor Recreation Program grant for the River Park project. Motion by Anne Lewis and seconded by Nancy Salminen to authorize the letter of support for the City of Brooklyn Park Outdoor Recreation Program application. Motion carried with all voting in favor – Salminen, Christianson, Pierson, Senjem, Torres Ray, Claflin, Lewis, Havelka, Bradley. DNR noted that they would need to abstain due to the funding program being within their agency.

Consider Letter of Comment – 311 2nd St SE, Minneapolis Development: Cordelia Pierson requested a letter of comment with details and a sample letter provided in the meeting packet. Since the request was made, the developer submitted a new proposal for a six story building at the site. There was discussion about the content of a comment letter in light of the new information. Motion by Cordelia Pierson and seconded by Nancy Salminen to authorize a letter of comment on the 311 2nd St SE Minneapolis Development, with intention being a revision of the sample provided, focused on potential byway and intrinsic resource impacts and thanking those involved for the process and result of a revised proposal. Motion carried with all voting in favor - Salminen, Christianson, Pierson, Senjem, Torres Ray, Lewis, Havelka, Bradley. Sen. Torres Ray expressed thanks for the Commission's engagement on this topic and David Kelliher noted thanks to Pierson for her leadership.

Lake Itasca to Grand Rapids (Nancy Salminen): Planning and seeking of funds for the Lady Slipper Scenic Byway pedestrian bridge continues. The ATP awarded \$227,000 in Transportation Alternatives funds. A request has been made to the Shakopee Mdewakanton Sioux Community for matching funds – the request went through the first review and is moving on in the process. Application for a DNR grant is also being considered.

Grand Rapids to Brainerd (Megan Christianson): Visit Grand Rapids is launching their spring campaign "Be Inspired by the Locals" this week. The upcoming summer campaign will feature the Mississippi River and leverage the Great River Road Flavors Promotion. A new craft brewery will open in late June, near the river. Christianson is a member of the Grand Rapids Comprehensive Plan Committee. Activities are planned in Aitkin for the coming months including a river cleanup, Fun Float for Families and race during Riverboat Days.

Brainerd to Elk River (Karl Samp, via email): The City of Brainerd is continuing to keep the Brainerd Riverfront project on its radar and has put money in the proposed budget (yet to be approved) for the half time coordinator. They also have applied for funding to connect the Cuyuna Trail with the Paul Bunyan Trail at the Brainerd Riverfront. St. Cloud had adopted their Riverfront Plan into their Master Plan. Monticello continues to look for ways to highlight their riverfront. Samp is now Pilot Emeritus of the National MRPC and Anne Lewis has been designated Pilot Pro Tem.

Elk River to Hastings (Cordelia Pierson): A report was included in the meeting packet highlighting metro area news and initiatives. The Owamni Falling Water Festival planned for August 3 in Father Hennepin Park was mentioned. David Stevens of Mill City Museum (MNHS) reported on activities of the St. Anthony Falls Heritage Board including several map projects – including one to get people from Minneapolis Convention Center in downtown Minneapolis to the riverfront.

Hastings to Iowa Border (Sheronne Mulry, via handout): A handout on current activities of the Lake Pepin Legacy Alliance was referenced in the meeting packet.

Tourism (Lisa Havelka): Explore Minnesota recently held the Minnesota Tourism Conference in Saint Paul. MN-MRPC members were encouraged to view the presentations, which are available online. A link will be sent via email. Megan Christianson received the Rising Star Award at the conference – congratulations! The new "Finding Your True North" campaign was rolled out. Spring promotion will launch soon.

Historical Society (David Kelliher): MNHS is looking forward to the start of historic site season. A new marketing approach is being utilized this year – theme brochures to group different historic sites

together. "The Mighty Mississippi" is one of the brochures and features MNHS sites along the river, which all happen to be MN GRR Interpretive Centers as well. Megan Christianson requested a supply for her area. The information will also be available on the MNHS website. If there is a bonding bill this session, MNHS will request funds for continuation of work at Historic Fort Snelling as well as asset preservation funds which would include Mill City Museum.

Natural Resources (Gina Bonsignore): Metro area comprehensive plans have been under review by DNR, with encouragement given to mention the Great River Road on asset lists if not already included. Planning for outreach events such as the annual Hidden Falls Event is underway. A partnership with Urban Roots is exposing youth to restoration of river sites - \$130,000 is available this year for restoration work in the program. Parks and trails projects in asset preservation and accessibility are included in the DNR's budget request to the legislature. A question was raised about Emerald Ash Borer efforts and it was noted that grant funding is being sought, and that the Mississippi Park Connection is working on raising awareness and seeking funds to replace trees.

Transportation (Scott Bradley, Carol Zoff): Thanks to efforts by the National Scenic Byways Foundation and Scenic America, the U.S. House recently passed legislation to reinstate the National Scenic Byways Program and the companion bill is moving through the Senate with bipartisan support. It has been noted that National Scenic Byways generate economic activity for communities, especially in small and rural communities. 44 byways are prepared to pursue designation as soon as the program reopens. Although there is not funding yet attached, reopening the program to new designations is a very positive development. The National Scenic Byway Foundation is conducting a survey of currently unfunded byway projects – a response has been submitted for the MN GRR and a ten state GRR response is in development. The GRR rerouting in Little Falls is now complete and had been signed off on by the Transportation Commissioner. Driving directions and maps will be adjusted accordingly. A request for comment on House File 1723 (MN-MRPC housekeeping bill) has been received by MnDOT and they are in support of the bill. Scenic Byways are now included as a check off on the early notification memo for construction projects and six reviews have been done already this year. An implementation spreadsheet has been developed for the ten state GRR Corridor Management Plan – priorities include route mapping. Penny Simonson of the East Central Regional Development Commission has been appointed to the National Scenic Byways Foundation Board.

National Park Service (John Anfinson): The Corps of Engineers has been directed to expedite the Upper Lock disposition study, and any Corps dam project in the country now must include full disposition as an option. Upper Post initiatives continue and progress is exciting. The Mississippi Multimedia Gallery kiosks continue to be placed and have been well received, including one at Jean Lafitte National Park in the New Orleans Area. As new national parks are considered a priority is now whether the location is the prime example of its kind. MNRRA is the only national park focused on the Mississippi River and staff are being encouraged to think about the area beyond the 72 mile park area, and how to interpret all of the Mississippi River – suggestions are welcome. The National Concierge Meeting will be held on Minneapolis this year and they have requested a presentation about the river. GRR maps could be provided as appropriate.

Other Business: Cordelia Pierson mentioned the Our Mississippi, Our Future initiative of The Nature Conservancy and suggested a possible presentation at a future MN-MRPC meeting by this and other partnerships that focus on the Mississippi River in Minnesota – the Trust for Public Land, Sentinel, Headwaters Board and others. MN-MRPC members were encouraged to consider other topics/presentations for future meetings as well. Megan Christianson mentioned a Water Summit held in the Grand Rapids annually for 300 middle school students. Are there river/GRR items that could be distributed? Key chains are in very low supply and lapel pin supply will be evaluated. Maps could be an option, and NPS or MNHS materials could be helpful as well.

Next Meeting – May 30, 2019, 2:30 – 5:00 p.m., State Office Building Basement Hearing Room

Adjournment - The meeting was adjourned at 4:45 p.m.

MN-MRPC FY19 Activity/Project Budget (Fiscal Year End 6/30/19)

5/20/19

<u>Activity/Item</u>	<u>Estimate</u>	<u>Spent as of 5/1/19</u>	<u>Pending</u>	<u>Remaining</u>	<u>% Spent</u>
Quarterly Meetings (4 @ up to \$1,650 each)	\$6,600.00	\$2,167.16		\$4,432.84	33%
Special Meeting (tentative - dependent on need)	\$1,650.00	\$0.00		\$1,650.00	0%
Executive Committee Meetings (2 @ \$250)	\$500.00	\$338.16		\$161.84	68%
MRPC Dues	\$15,000.00	\$15,000.00		\$0.00	100%
Admin Contract	\$26,400.00	\$17,600.00	\$4,400.00	\$4,400.00	83%
Website & phone basic costs (incl. 800 website + 300 phone + 204 Constant Contact)	\$1,600.00	\$1,288.25	\$64.48	\$247.27	85%
National Meetings	\$7,931.56	\$5,630.66	\$150.00	\$2,150.90	73%
Regional Meetings/Elections	\$600.00	\$588.78		\$11.22	98%
Mailing/Shipping Maps (10 State and MN GRR Maps)	\$500.00	\$150.94	\$35.00	\$314.06	37%
Additional Staff Hours (FY 18 - \$7,370)	\$6,250.00	\$6,380.00	\$550.00	-\$680.00	111%
Website Programming Changes - Minimal	\$500.00	\$779.52		-\$279.52	156%
Other Meetings/Travel/Per Diems	\$500.00	\$684.59		-\$184.59	137%
Website Updates for Map Tools, Mobile Devices					
Ambassador Development					
New Print Map					
GRR at the Capitol - Information Meetings/Presentations		\$203.59	\$93.84	-\$297.43	
Estimated Total Expenses	\$68,031.56	\$50,811.65	\$5,293.32	\$11,926.59	82%
Total FY '19 Allocation	\$63,000.00				
Carry forward from FY '18	\$5,031.56				
Total Funds Available for FY '19	\$68,031.56				

RELAY OF VOICES

a relay connecting the voices of the Mississippi River region through shared movement and listening

<https://relayofvoices.com>
@relayofvoices

MINNESOTA HIGHLIGHTS

PARK RAPIDS:

Day One spent on the Heartland Trail with members of Itascatur, learning about the natural resources around Park Rapids and the community's connection to Itasca.

ITASCA BIO FIELD STATION:

Day Two interacting with the Nature of Life first year students during orientation day at the University of Minnesota Biological Field Station. As the students head north to the river, the Relay Team heads south!

CASS LAKE:

Day Four convenes a gathering of Ojibwe tribal members and cultural leaders at Norway Beach Campground to share stories and movement.

GRAND RAPIDS:

Day Seven and Eight include several events coordinated with partner Itasca County YMCA, including story gathering, performance event and community meal, and a movement workshop with high school color guard!

LONG LAKE CONSERVATION CTR:

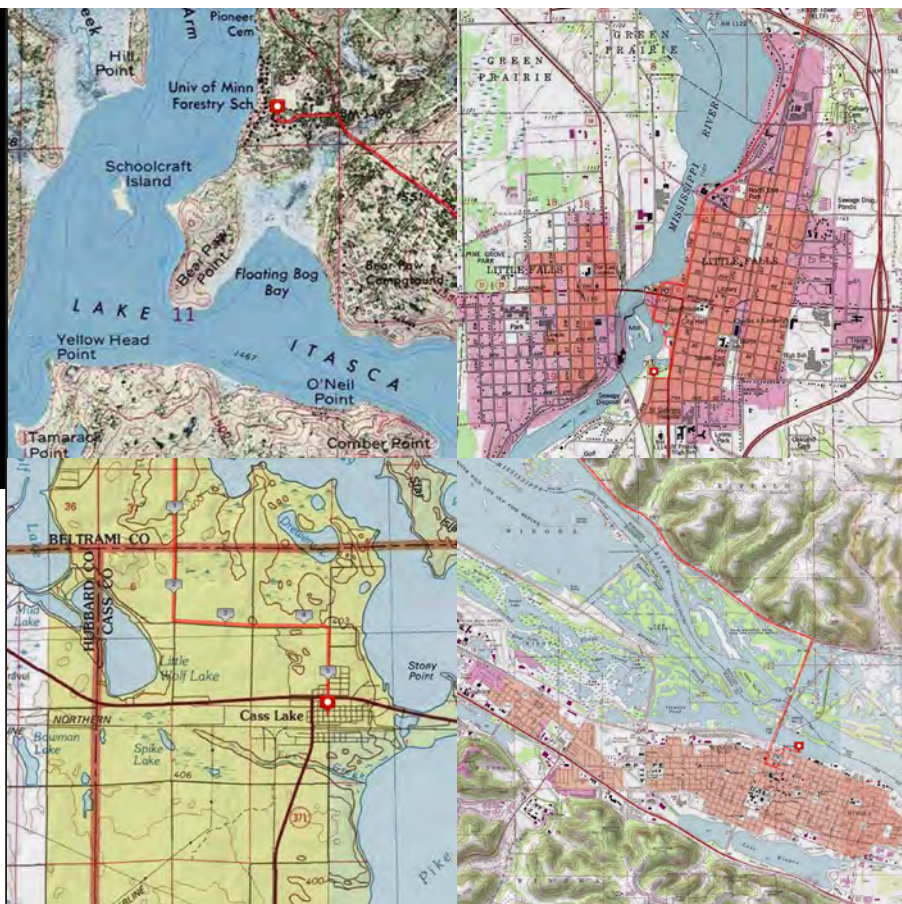
Day Eleven includes interactions with Summer Camp, Long Lake staff and grounds of Center, and an evening performance and presentation by folks from Forest to Tap.

LITTLE FALLS:

Day Fifteen and Sixteen opens with lunch with the Mayor, followed by interviews, tours of local sites, a community meal and performance at Sprout and Dinner at the acclaimed Black and White Restaurant and more!

MINNEAPOLIS/SAINT PAUL:

Days Twenty-one and Twenty-two include interactions with a variety of river experts and a community gathering and performance at the Mill City Museum with support from the Mississippi Park Connection.



RELAY MINNESOTA - 22 PLACES, 24 DAYS

- 0.0 mi • Monday, July 8, 2019 • Lake Itasca (Headwaters), MN
- 21.8 mi • Tuesday, July 9, 2019 • Park Rapids, MN
- 43.5 mi • Wednesday, July 10, 2019 • Biological Field Station, MN
- 80.3 mi • Thursday, July 11, 2019 • Bemidji, MN
- 100.0 mi • Friday, July 12, 2019 • Cass Lake, MN
- 123.8 mi • Saturday, July 13, 2019 • Bena, MN
- 152.2 mi • Sunday, July 14, 2019 • Deer River, MN
- 175.3 mi • Monday, July 15, 2019 • Grand Rapids, MN
- 199.4 mi • Wednesday, July 17, 2019 • Jacobson, MN
- 222.6 mi • Thursday, July 18, 2019 • Palisade, MN
- 229.2 mi • Friday, July 19, 2019 • Long Lake Conservation Center, MN
- 255.6 mi • Saturday, July 20, 2019 • Aitkin, MN
- 275.2 mi • Sunday, July 21, 2019 • Crosby, MN
- 304.9 mi • Monday, July 22, 2019 • Brainerd, MN
- 339.0 mi • Tuesday, July 23, 2019 • Little Falls, MN
- 361.1 mi • Thursday, July 25, 2019 • Rice, MN
- 378.2 mi • Friday, July 26, 2019 • St. Cloud, MN
- 407.5 mi • Saturday, July 27, 2019 • Monticello, MN
- 420.4 mi • Sunday, July 28, 2019 • Elk River, MN
- 451.8 mi • Monday, July 29, 2019 • Minneapolis, MN
- 466.1 mi • Tuesday, July 30, 2019 • Saint Paul, MN
- 497.9 mi • Wednesday, July 31, 2019 • Prairie Island Indian Community, MN
- 522.6 mi • Thursday, August 1, 2019 • Bay City, WI
- 543.9 mi • Friday, August 2, 2019 • Pepin, WI
- 563.0 mi • Saturday, August 3, 2019 • Alma, WI
- 589.6 mi • Sunday, August 4, 2019 • Winona, MN



FOR IMMEDIATE RELEASE

Brittany Cruickshank
Media Contact, DEVENY
504-949-3999 ext. 211
bcruickshank@deveney.com

Relay of Voices Expedition Passes Through X on Journey Down the Mississippi
Local Citizen Stories Collected as Cultural Data

CITY NAME – Month XX, 2019 – *Relay of Voices (Relay)*, a four-month long expedition from the Headwaters to the Mouth of the Mississippi River, makes its way through X today. Spearheaded by Victoria Bradford Styrbicki with the assistance of a “relay team” made up of support staff and regional volunteers, *Relay* embarks on a mission to collect individual stories across the Mississippi River region, acting as a mobile studio space traversing the landscape, giving everyone involved the opportunity to engage in the artistic process and feel the urgency of being connected in space and time. The entire endeavor will take place from July through November 2019.

In X, *Relay* plans to “relay the voices” and landscapes from X (the town before) to connect them to the stories of X (the new town) during the X (event) on X (date) at X (location). The public is invited to witness and participate in this storytelling process. **ADD IN OTHER EVENT DETAILS WITH ASSISTANCE FROM LOCAL PARTNER**

Relay has been working with 104 communities, 20 – 40 miles apart, as daily stops on the expedition as it travels downriver through Minnesota, Wisconsin, Iowa, Illinois, Missouri, Kentucky, Tennessee, Arkansas, Mississippi and Louisiana, finishing at the Mouth of the River at the Gulf of Mexico.

“We want to build a create a platform for listening with the body in and around the communities of the Mississippi River,” says Executive and Artistic Director, Victoria Bradford Styrbicki. “As we build a physical vocabulary drawn from the lives of the people of X. Through this, we hope a story emerges that resonates beyond the river and connects all Americans. Through accumulation and just being present, we hope to be a catalyst for all the voices of X while also providing insightful data for scientific purposes.”

Each stop along the way has been identified and vetted into an organized route to provide an accurate representation of both the river and the diversity of the communities surrounding. A primary reason for choosing the Mississippi River region was the dichotomy of rural and urban communities there, with many of them still making a living off the water and land. The river is home to a collection of small towns ranging between 200 and 60,000 in population anchored by 7 cities with populations over 100,000, serving as beacons of culture and urbanity along the water way.

Thanks to the help of (name organizers who selected the interview participants) 6 local residents have been asked to serve as the “voices” of their X (name of community), being featured at X (event) in a group dialogue and interacting with Styrbicki earlier in the day. X (name of community) assembled a broad cross-section of “voices” from different age groups, cultural backgrounds, professions, as well as relationships to the river. Those participating include: **ADD NAMES OF SUBJECTS.**

INSERT QUOTE FROM LOCAL REPRESENTATIVE ABOUT EXICTEMENT OF PROJECT PASSING THROUGH COMMUNITY



Following the day's activities and the performance event, on the morning of **X (date)**, the roughly marathon's distance to **X (next community)** will be approached as a relay composed of surrogate walkers, runners, cyclists, and paddlers from neighboring river communities. When no regional surrogates step in to carry the voices downriver, Styrbicki will approach the distance as a duathlon—a run out of town, cycling the longer stretch between, followed by a run into the next town. Styrbicki and the relay team will “gather the landscape” making observations with their senses as well as with GPS body cameras mounted to their torsos or bikes for use in mapping analysis and storytelling. **X has planned a walking, running, or cycling escort in or out of X to share in the effort.**

Relay has partnered with 29 Convention and Visitors Bureaus (CVBs), 19 Chambers of Commerce, 30 arts, culture and educational organizations, 45 city and county governments, as well as hundreds of individual volunteers local to each community to solidify programming and to assist with accommodations, transportation, event space and nourishment to support the expedition as it travels south.

Relay team members include relay director Victoria Bradford Styrbicki, project collaborator Tom Styrbicki, certified triathlon coach Nic King-Ruley, and project manager Dinah Bradford. A House Unbuilt company members who previously contributed to the development of the project include Zack Bailey, Carla Gruby, Angela Gronroos, Lisa Leszczewicz, Ione Sanders, Kara Jefts, and Caitlin Rafferty. Relay of Voices is a project of A House Unbuilt, a 501c3 nonprofit corporation based in Lake Charles, La. and Chicago, Ill.

###

About Relay of Voices

Relay of Voices is a work of social practice dance that utilizes principles of durational performance, movement research, social choreography, endurance art, placemaking, and environmental activism. By staging a four-month long expedition from the Headwaters to the Mouth of the Mississippi River, Relay will gather landscapes and voices through various forms of movement and listening, grounding the stories of Middle America. Together with local participants, choreographer Victoria Bradford Styrbicki is physically moving downriver at a pedestrian scale, building a vocabulary of connectedness across the many voices of the River. For more information, visit <https://relayofvoices.com/>.

About A House Unbuilt

A House Unbuilt (AHU), a 501c3 nonprofit corporation, is based in Lake Charles, La. and Chicago, Ill. AHU uses movement and the body to engage and investigate the social fabric of rooted communities. Drawing on vocabulary from dance, sport, and everyday life, A House Unbuilt seeks to un-build the learned architecture of the body to reveal the insights and knowledge housed only there.



National MRPC Marketing Report
May 30, 2019 Q2 MN-MRPC Meeting

1st Quarter Marketing Report Highlights

- E-Newsletter subscribers – more than 2,500 new subscribers compared to Q1/18
- Facebook – 330 new fans
- Facebook ads – good click-through & added 187 fans
- Instagram – 290 new followers
- Top visited page on web site is “Best Drive in America”
- Scenery posts – highest viewership
- Audience skews older
- Synopsis provided on next page

MRPC Fact Book

- Developed as background for policy makers, funders, state agency partners
- Introduced at meetings with Mississippi River mayors and Mississippi River House and Senate Caucus members

Maps – Target distribution Memorial Day weekend

Flavors Promotion - Launch is mid-June and runs through the summer

10-state CMP priorities – the Marketing Committee, like all the MRPC committees, is identifying priorities for their areas as a first step in implementation.

Relay of Voices – Sample media packets and a localized news release for use by communities in promoting events in their area can be found at:

<https://relayofvoices.com>

Mobile + Tablet	52.5%	2:15
Desktop	47.5%	2:22

Takeaways

Strong organic traffic to key pages in the site contributed to solid Q1 site metrics. Overall site pageviews were up more than 11 percent compared to Q1 2018. The top page on the site was again *The Great River Road – The Best Drive in America* (the site’s “about” page). The page is very SEO friendly, as it answers some key questions that travelers have about the byway. Google has awarded the page with the top position in search results for the term “Great River Road” (followed by the experiencemississippiriver.com home page), so it generates substantial traffic to the site. It’s a good entry point for the site, reflected by the relatively low bounce rate (42%).

The *Order a FREE Great River Road 10-state map* page has the site’s second-highest page views (9,010, up 31% over Q1 2018). Organic search helped lift this page, although it also drew considerable traffic from direct links and our social media posts.

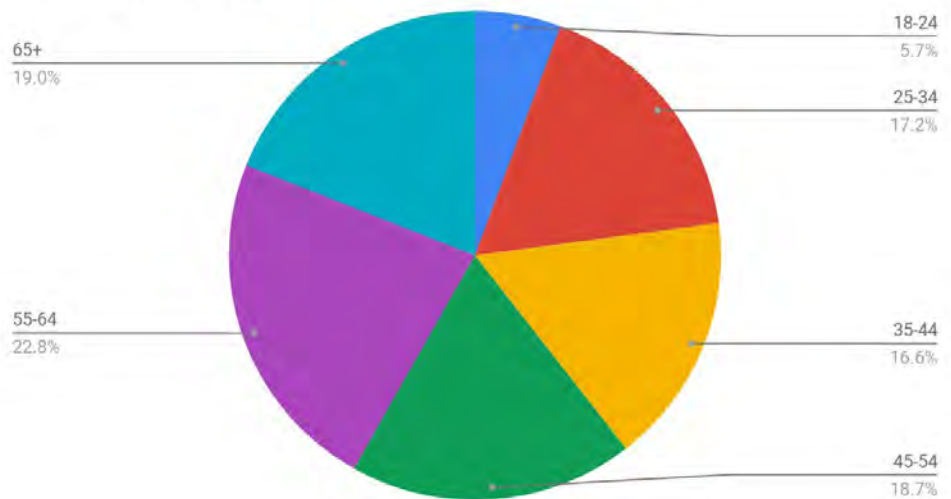
In terms of demographics, our site audience was split fairly evenly between men (50.1% and women (49.9)

The site audience was also fairly evenly split across most age demographics in Q1, although the site received a bit more traffic from the 55-64 audience and fewer visits from the 18-24 audience. Overall, the site is reaching all age demographics.

About 86% of site visitors came from the United States. The United Kingdom was the top source of overseas site visitors, followed by Canada, Germany and Australia.

In terms of the U.S. audience, Chicago was metro area with the largest number of site visitors (3,574), followed by Minneapolis-St. Paul (2,714), St. Louis (1,221) and Dallas-Ft. Worth (903).

Demographics - age



LOCKS AND DAMS

Corps Puts Off Decision On Twin Cities Locks

MAY 5, 2019 • BY WATERWAYS JOURNAL

The St. Paul Engineer District is delaying plans to dispose of three Mississippi River locks and dams near the Twin Cities.

For a year, the Corps had been considering the fate of the three locks and dams in a single disposition study. But the Water Resources Development Act (WRDA) bill that was signed into law in October 2018 directed the Corps to break the disposition study into two studies: one considering Upper St. Anthony Falls Lock and Dam and the other looking at Lower St. Anthony Falls Lock and Dam and Lock and Dam 1.

Upper St. Anthony Falls Lock and Dam has been closed to commercial traffic since 2015 in response to concerns about the spread of Asian carp. The move was strongly supported by Minnesota's congressional delegation, and the enabling law was included in the 2014 Water Resources and Reform Development Act.

Two sections of the 2018 WRDA affect the disposition study. Section 1168 specifies that a broader consideration of the effects of infrastructure removal—including environmental effects—should be included in any disposition study.

Section 1225 addresses the lock and dam study specifically and provides guidance. George Stringham, public affairs officer for the St. Paul District, told *The Waterways Journal* that while the district is planning public meetings over the next few months, it is awaiting further guidance from Corps headquarters before announcing their dates and times.

In the Twin Cities, a vigorous debate has been taking place about whether or not to completely decommission the locks and dams. Some environmental interests were initially enthusiastic about the idea of removing all three locks and dams and returning the river to a “wild” state. But numerous other local interests expressed concern about the effects of such a move, saying it could threaten historic riverside properties and entail millions of dollars in costs.

Trending Now

[Floods Approach Records, Extend Lock Closures](#)

[As River Rises, Corps Begins Reopening Bonnet Carré Spillway](#)

[Towboat Sinks In GIWW](#)

[Bruce Oakley Inc. To Buy Lange-Stegmann](#)

[CG, NTSB Conduct Hearing On Sunshine Bridge Allision](#)

[Maritime Partners LLC Christens Mv. Larry B. Whipple](#)

Search WJ

Search for:



Minnesota Mississippi River Parkway Commission

56 33rd Avenue South, #283 • St. Cloud, Minnesota 56301

Phone: 651-341-4196 • E-Mail: info@MnMississippiRiver.com

Members of the House: Anne Claflin (DFL – 54A); Tony Jurgens (R – 54B) **Members of the Senate:** David Senjem (R – 25); Patricia Torres Ray (DFL – 63) **State Agency Appointees:** Paul Hugunin – Agriculture, Scott Bradley – Transportation, Lisa Havelka – Explore Minnesota Tourism, Keith Parker – Natural Resources, Open – Historical Society **Regional Appointees:** Open – Lake Itasca to Grand Rapids, Megan Christianson – Grand Rapids to Brainerd, Karl Samp – Brainerd to Elk River, Cordelia Pierson – Elk River to Hastings, Sheronne Mulry – Hastings to Iowa Border **Member at Large:** Anne Lewis

Update for MN-MRPC consideration 5/30/19, shaded in gray below **Process for Project Comments, Letters of Support, or Related Action**

The following process will be followed after a request for Commission action is received.

- 1) If the timeline allows for discussion at a regular quarterly meeting –
 - The topic will be placed on the agenda at the discretion of the Chair with information sent out to members in advance for review and consideration.
 - The agenda will be posted to the legislative calendar and MN-MRPC meeting webpage to allow for public notice. Public testifiers may be asked to sign up in advance.
 - Discussion and public testimony, if applicable, will take place at the meeting.
 - Commission will vote on requested action.
 - Staff will follow up with letter requestor as directed by the Commission.
- 2) If the timeline does not allow for discussion at a regular quarterly meeting –
 - A regional Commission member may choose to attend meetings for information or communicate with their stakeholders directly regarding an issue, without speaking on behalf of the full Commission or representing the full Commission.
 - The Chair will determine whether to call a special meeting for consideration of the request.
 - The request and any background information will be emailed to MN-MRPC members.
 - A meeting of the MN-MRPC will be scheduled to allow for public testimony with the agenda posted to the legislative calendar and the MN-MRPC meeting webpage. A meeting notice will be posted on the Commission's website, and a room will be available at the State Office Building to allow for members of the public to attend.
 - MN-MRPC members may participate by phone or in person.
 - Discussion will take place and a decision will be made on how to proceed.
 - Commission will vote on requested action.
 - Staff will follow up with letter requestor as directed by the Commission.

The MN-MNRPC asks for the following information to help facilitate the process –

- Name of requestor and contact information
- Topic
- Brief overview or link to details for Commission review
- Action requested – letter (provide draft), MN-MRPC representation at a meeting, presentation to MN-MRPC, material/update for information purposes only, etc.
- Positive or negative impacts to the Great River Road, Scenic Byway Intrinsic Resources (archaeological, cultural, historic, natural, recreational, scenic) and/or MN-MRPC mission (To preserve, promote and enhance the scenic, historic and recreational resources of the Mississippi River, to foster economic growth in the corridor and to develop then national, scenic and historic byway known as the Great River Road.)
- Deadline for requested action or related meeting date
- Details on where letter is to be sent, or meeting to be attended

Adopted 5/19/16; Revised 3/2/17, 8/31/17

American Eagle: A Visual History of Our National Emblem

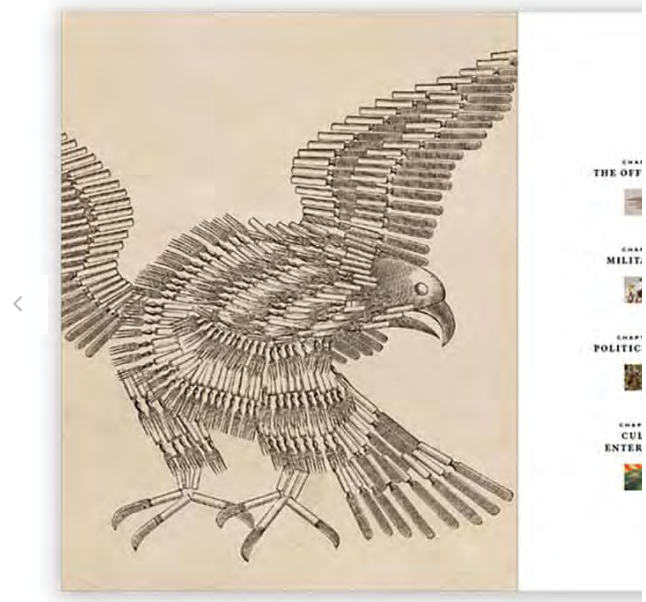
Eagle lovers have a new book to celebrate along with the 30th anniversary of the National Eagle Center.

American Eagle: A Visual History of Our National Emblem by Preston Cook is now available. A survey of The Preston Cook Collection, it is the only book covering the eagle emblem in American life and culture in such detail.

Beautifully photographed and illustrated, the book highlights some of the 25,000 eagle art and objects in The Collection that will be housed and exhibited in the National Eagle Center expansion. The book charts the bald eagle's appearance in American life covering everything from military, war and politics to art, entertainment and travel.

When the National Eagle Center expansion is completed, visitors will see The Collection in permanent and rotating museum exhibits and galleries. Imagine an exhibit touring the eagle as seen in children's entertainment like eagle toys, eagle banks, kites, comic books, candy prizes, and club badges decorated with outspread eagle wings. Or exploring how the eagle has been used by the US military to inspire, motivate and unify. Or the eagle in corporate logos, sports teams, place names, and even rock bands. Eagles in American life will be presented in awe-inspiring new ways in the future National Eagle Center.

A preview exhibit of The Preston Cook Collection is currently in the second-floor gallery. A new selection of Collection items is now on display.



ABOUT THE COLLECTOR: Preston Cook

For 50 years Preston Cook has devoted his time to all things American eagle. He has amassed and meticulously organized a collection of more than 25,000 eagle objects — from kitsch to fine art, from the everyday to the rare — that reflect American life from the American Revolution to the present.

Cook has served on several government commissions and some twenty boards of directors, including for the American Bald Eagle Foundation, the Oceanic Society, and the Point Reyes Bird Observatory. He is a member of the Audubon Society, the National Eagle Center, and the Sons of the American Revolution, and is a life member of the American Bald Eagle Foundation, the American Legion, the International Federation of Fly Fishers, and Trout Unlimited.

Cook's collection has been donated to the National Eagle Center. Proceeds from the sales of his book, *American Eagle: A Visual History of Our National Emblem*, will be donated to the National Eagle Center to help fund the museum that will house the collection.

A retired real estate investor, Cook lives with his wife in Wabasha, Minnesota, on the banks of the Mississippi River, a major flyway for the bald eagle.

For more information, please visit [The Preston Cook Collection website](#).

Photo by Blake Darst



Available Now!

To order your copy:



Please order your through the National Eagle Center by clicking the button below. Sales of the book through the National Eagle Center will support the development of the museum.

Any questions concerning orders should be directed to eaglebook@nationaleaglecenter.org.

ORDER YOUR COPY



BARNES & NOBLE



50 Pembroke Ave.
S.
Wabasha, MN
55981

(651) 565-4989
(877) 332-4537

[VIEW MAP](#)

- > [About](#)
- > [Contact](#)
- > [Donate](#)
- > [Membership](#)
- > [Volunteer](#)
- > [Employment](#)
- > [Schedule Your Group](#)





US Army Corps of Engineers St. Paul District

Search St. Paul Distr

The St. Paul District is updating the strategic land use and recreation management document that will guide the district's comprehensive management and development of natural, recreational and cultural resources of the Upper Mississippi River basin for years to come. The master plan, while conceptual in nature, will serve as the vision for both environmental stewardship and recreation as the Corps continues to serve the public in the 21st Century.

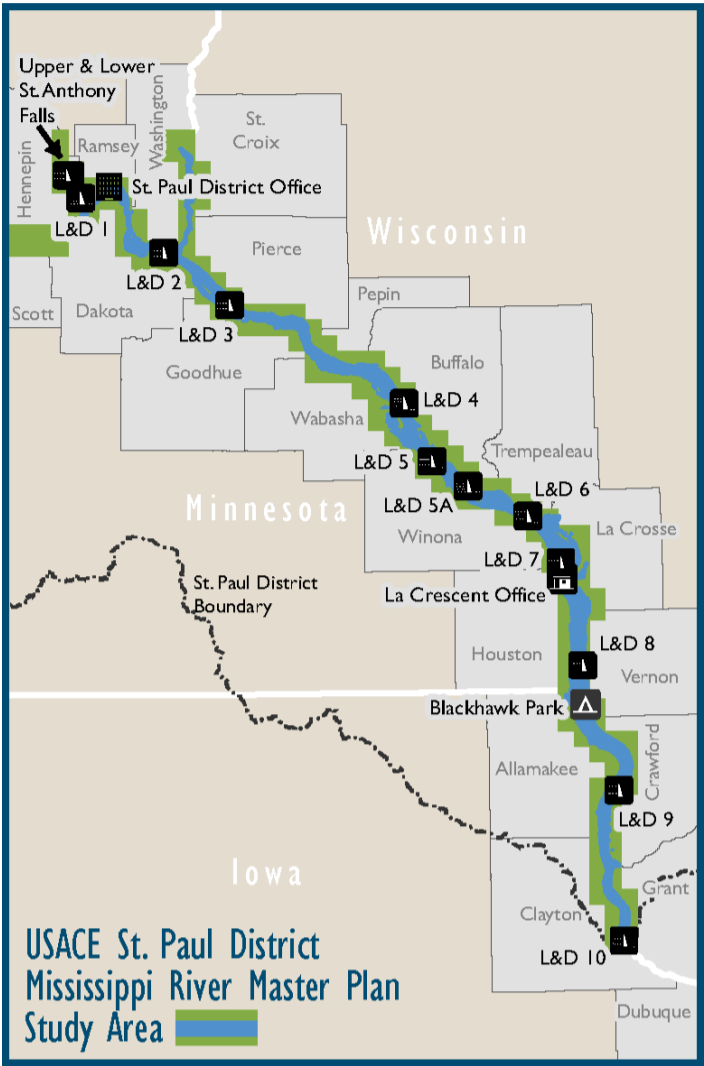
Why Revise the Master Plan?

The plan was last updated in 1988 and supplemented in 2011 with the Land Use Allocation Plan. The current plan is in need of revision to address changes to the environment, outdoor recreation trends and the Corps' management policy.

Developed by a Corps interagency team, the plan will include coordination with local, state and federal agencies and tribal representatives, along with input from the public.

The primary goals of the plan include:

- Establish an overall land use management plan
- Identify resource objectives
- Identify associated design and management concepts



**U.S. Army Corps of Engineers
St. Paul District
Regional Planning and
Environmental Division North**

180 5th St. E., Suite 700
St. Paul, MN 55101
(651) 290-5284

Email questions or comments:
UMRMasterPlan2019@usace.army.mil



**Upper Mississippi River
Master Plan**

[Upper Mississippi River Master Plan \(1988\)](#)

[Upper Mississippi River Land Use Allocation Plan \(2011\)](#)

**Upper Mississippi River Map
Plates**

- [Head of Navigation to Lock and Dam 3](#)
- [Lock and Dam 3 to Lock and Dam 4](#)
- [Lock and Dam 4 to Lock and Dam 6](#)
- [Lock and Dam 6 to Lock and Dam 8](#)
- [Lock and Dam 8 to Lock and Dam 9](#)
- [Lock and Dam 9 to Lock and Dam 10](#)

Our Mission

The mission of the U.S. Army Corps of Engineers is to deliver vital public and military engineering services; partnering in peace and war to strengthen our nation's security, energize the economy and reduce risks from disasters.

About the St. Paul District

The official public website of the St. Paul District, U.S. Army Corps of Engineers

DRAFT – For MN-MRPC Review and Discussion on 5/30/19

Date

City of Fort Ripley
Attn: Mary Tschida, City Clerk
PO Box 155
Fort Ripley, MN 56449

Dear Fort Ripley Mayor and City Council:

It has come to our attention that the City of Fort Ripley has received a request to mine gravel on properties along the Nokasippi River as it flows into the Mississippi. This location is adjacent to the Great River Road National Scenic Byway and the Mississippi River Trail State Bikeway, a National Millennial Trail.

The Minnesota Mississippi River Parkway Commission (MN-MRPC) is a statutory commission whose mission is to promote, preserve and enhance the resources of the Mississippi River Valley and to develop the highways and amenities of the Great River Road. The Minnesota Great River Road National Scenic Byway spans 565 miles, 20 counties, 43 communities, three tribes and six unique destination areas from Lake Itasca to the Iowa Border. The proposed project would have potential impact on the Commission's mission and all six National Scenic Byway Intrinsic Resources (archaeological, cultural, historic, natural, recreational and scenic).

The requested mining site abuts the Nokasippi River, is near the Hummingbird Mound Complex of Native American burial mounds, and is across TH 371 from the Minnesota wayside interpretive marker for historic Fort Ripley and the Fort Ripley Landing Mississippi River Public Water Access. There are abundant cultural and historical resources in this immediate area and potentially on the proposed mining site. The Nokasippi River itself is significantly vulnerable to damage and contamination and together with the Mississippi River, this site contributes to a highly sensitive wildlife and natural area.

As a result, the MN-MRPC requests that no action be taken until a full analysis of intrinsic resource impacts, byway and bikeway traveler impacts, inventory of potential issues of harm, and a plan of action for preservation and protection are completed.

Thank you for your consideration. We look forward to updates on the proposal's status.

Sincerely,



Minnesota Mississippi River Parkway Commission
Agency & Regional Updates
May 2019

At-Large Member – Anne Lewis

- Relay of Voices – MRPC has become a collaborating marketing partner with the Relay of Voices, a 10-state Great River Road artistic and civic engagement project intended to call public attention to the people and issues in the Mississippi River Valley as the heart of America.
 - Sample media packets and a localized news release for use by communities in promoting events in their area can be found at: <https://relayofvoices.com>
 - A schedule of Minnesota locations and dates is in your packets
 - The sample localized release is in your packets
- USACE Mississippi River Master Plan (St. Paul office)
 - “We are asking, whether you use the river or not but value its existence, to provide us your input on the future of the river.”
 - Primary goals:
 - Establish overall land use management plan
 - Identify resource objectives
 - Identify associated design and management concepts
 - Encompasses 240 miles and nearly 52,000 acres on the Mississippi River from St. Anthony Falls Lock & Dam to Lock & Dam 10 in Guttenberg, IA.
 - The Corps seeks to balance and enhance fish and wildlife management actions and recreation opportunities while maintaining the river’s navigation system.
 - Comments can be made at this site: <https://www.mvp.usace.army.mil/Upper-Mississippi-River-Master-Plan/>
- Scenic Byways Legislation – National Scenic Byway Foundation, of which we are a member together with Scenic America, is leading a charge to re-fund National Scenic Byway legislation. So far, both the House and Senate have authorized the reopening of legislation for grant purposes. Funding the legislation is the next step.
- Annual Meeting: LaCrosse Wisconsin Sept. 17 – 19, 2019



**Minnesota Mississippi River Parkway Commission
Agency & Regional Updates
May 2019**

Bluffs Region (Hastings to Iowa Border) – Sheronne Mulry

- Recent events – Flood Run Annual Motorcycle Tour, April 20; Ohuta Park Beach & Park Clean Up, April 27
- Upcoming events – Tour de Pepin, June 1; Water Ski Days, June 28 – 30 in Lake City; Lake Pepin/Lake City Float-A-Palooza, August 17; Lake City 5th Annual Junk Crush, Sept. 14 – 15
- General information – USACE working with the City of Wabasha on dredged material management
- Road project – Highway 61 from Lake City to Wabasha, see next page for details

Highway 61 Resurfacing – Kellogg to Lake City

Schedule - May 6 - October 25, 2019

Location - Hwy 61 from Hwy 42 near Kellogg to just north of Lake City. No work will occur in Lake City, which will have a separate project in 2020.

In 2019, the Minnesota Department of Transportation will be resurfacing Hwy 61 from Hwy 42 to north of Lake City. As part of this project, MnDOT, in partnership with the City of Wabasha, will be improving safety access on the highway by constructing several reduced conflict intersections (RCIs).

Summary of work - Hwy 61 will be resurfaced with blacktop in the summer of 2019. Some crossings of Hwy 61 will be closed and reduced conflict intersections will be constructed through Wabasha.

- Culverts will be replaced and/or repaired to address drainage issues.
- Pedestrian facilities will be upgraded in Lake City to meet current ADA Standards.



Traffic impacts

- During the resurfacing work, often called a mill and overlay, traffic will be reduced to single lane traffic where the work is taking place. Intersections will have brief closures when the paving operation moves past them, which allows the blacktop to achieve a desired strength.
- Hwy 61 traffic will be detoured for approximately one month between Wabasha and Lake City on Wabasha County Roads 4 and 10 in order to complete culvert replacements. The detour is scheduled from July 8 - August 9, 2019.
- Lane closures for the RCIs will occur at the intersections of Hwy 60, Shields Ave, and County 30 (Bruegger Valley Rd) during the work through Wabasha. Eventually side street traffic will not be able to cross all four lanes at these locations. To learn more about RCIs go to MnDOT's website mndot.gov/roadwork/rci/.