



**Minnesota Mississippi River Parkway Commission
2nd Quarter Meeting
June 1, 2023 • 2:00 – 4:30 p.m.
Hybrid – MN State Capitol Room 120 and Zoom**

DRAFT AGENDA

- 2:00 p.m. Welcome & Introductions** Anfinson/All
- Welcome New Members
- 2:20 p.m. Approve Today's Agenda & Minutes from 11/17/22** Anfinson/All
- 2:25 p.m. Commission Business**
- Election of Officers Samp/All
- Executive Committee Appointments Miller/All
- New Member Orientation Anfinson/Miller
- Legislative Updates LCC
- Budget Report Packet/Lewis/Miller
- 2:55 p.m. National MRPC**
- MRPC 2023 Annual Meeting – Save the Date (Sep. 20-22) Anfinson
- Committee Updates Committee Members
 o Communications & Marketing
 o Culture & Heritage
 o Environment, Recreation & Agriculture
 o Transportation
- MRPC Online Member Directory Miller
- 3:25 p.m. National Scenic Byway Grants – Status and Letters of Support** Anfinson/Miller/All
- Dakota County - Project Funded
- Consider Updated Letters of Support for Future Applications
 Leech Lake Band of Ojibwe – Cultural Center
 Washington County – Point Douglas Park Trailhead
- 3:40 p.m. General Letter of Support Requests** Miller/All
- Cuyuna Lakes Trail Association - Brainerd to Riverton Trail Project
- City of Sartell – Park & Trail Enhancements
- 3:50 p.m. Commission Projects**
- MN Great River Road Ambassador Program Project Team
- Drive the Great River Road Month 2023 Project Team
- 4:00 p.m. Commission Member Updates**
- Refer to Written Updates in Packet All
- Brief Highlights or Action Requests All
- 4:25 p.m. Other Business**
- 4:30 p.m. Wrap Up and Adjourn**



**Minnesota Mississippi River Parkway Commission
4th Quarter Meeting – November 17, 2022
Historic Fort Snelling/Zoom Hybrid
MINUTES – Draft**

Commissioners Present

Megan Christianson – Grand Rapids to Brainerd
Karl Samp – Brainerd to Elk River
Jennifer Weaver – Hastings to Iowa Border
Sen. David Senjem
Sen. Patricia Torres Ray
Paul Hugunin – Agriculture Appointee
David Kelliher – Historical Society Appointee
Grant Wilson – Natural Resources Appointee
Lisa Havelka – Tourism Appointee
Anne Lewis – At Large Member

Diane Henry Wangensteen – LCC
Carol Bisbee - LCC
Chris Miller – MN-MRPC Staff

Members Absent

Sally Fineday – Lake Itasca to Grand Rapids
John Anfinson – Elk River to Hastings
Rep. Emma Greenman
Rep. Kristin Robbins
Marni Karnowski - Transportation Appointee
Tucker Blythe – National Park Service

Technical Advisors/Staff Present

Kelli Bruns – Natural Resources
Carol Zoff – Transportation

Speakers & Guests Present

Nicole Bartelt, Department of Transportation
Christina Iliev, Department of Agriculture

Meeting was called to order at 3:00 p.m. by Chair Senjem. A quorum was present. Special thanks to Historic Fort Snelling and the Minnesota Historical Society for hosting today's meeting and providing a tour.

Approve Minutes from 8/11/22 Meeting: Motion by Anne Lewis and seconded by Megan Christianson to approve the August 11, 2022 meeting minutes as presented. Motion carried.

Budget Report: The budget report in the meeting packet was referenced by Chris Miller and Anne Lewis. The report includes columns identifying the FY 23 base allocation along with carry forward funds remaining from FY 22. Report approved by consensus.

Regional Meetings/Elections: Regional Meetings and elections of Regional Commissioners are coming up on November 30 (Metro Region) and December 1 (Bluffs Region). Meetings will be held via Zoom and MN-MRPC members are always welcome.

2023 Quarterly Meetings: Quarterly meeting dates for 2023 are to be determined and will be announced in December. Meetings will likely be in a hybrid format with the in-person location being somewhere within the Capitol Complex. Due to high demand for hybrid rooms during the legislative session, the first quarter meeting could be scheduled on a Friday instead of the usual Thursday. Legislative appointments to the MN-MRPC will be made in early 2023, sometime prior to the first meeting.

Election of At-Large Member: The At-Large Member of the MN-MRPC is appointed by the other 14 members every two years. Nominations for the position were requested by email. Chair Senjem announced that three nominations for Anne Lewis were received and called for any additional nominations with none noted. Motion by Karl Samp and seconded by Grant Wilson to close nominations and elect Anne Lewis as At-Large Member for a new two-year term. Motion carried.

Member Updates: Member updates were included in the meeting packet.

National MRPC Annual Meeting and Updates: Anne Lewis noted the handout in the meeting packet, a summary prepared by the National MRPC Office. She congratulated John Anfinson on his election as Pilot Pro Tem (Vice Chair) of the MRPC and congratulated Sen. Senjem on receiving the MRPC Distinguished Service Award. Technical committee work was the main focus of the meeting, the first in-person ten state meeting since 2019. Sen. Senjem reported that the meeting also involved some joint activities with the National Caucus of Environmental Legislators, who were meeting in the same venue. Karl Samp asked about future national meetings and locations, including if Bemidji is still being

considered as a possible location. The MRPC Board will be discussing future meeting formats soon and will be deciding on whether there will be one or two in-person meetings annually.

Drive the Great River Road Month 2022 Report: Christina Iliev from the Minnesota Department of Agriculture reported on results of the Fall Harvest promotion for Drive the Great River Road Month 2022. She provided a recap of the campaign components including the State Fair kick-off event, webpage, itineraries, Pick of the Month newsletter, traveler kits with survey, photo contest and social media. Thanks were expressed to all Commission members and agencies that assisted with information, kit items and communications. Chair Senjem and members applauded the enthusiasm and leadership of the Minnesota Department of Agriculture and Minnesota Grown Program and thanked them for the outstanding promotion. A request was made for a copy of today's presentation. It will be emailed to members and is also available at <https://www.commissions.leg.state.mn.us/mrpc/Meetings22-23.html> with other November 17 meeting materials.

Transportation Alternatives Projects – Letters of Support: Chris Miller provided background on the process the Commission has used in recent years to consider letters of support for this funding source. The Commission considers information from letters of intent to apply for the funding, and then if the Commission approves support letters, staff reaches out to project applicants to offer letters if they move forward with the full application. This process allows the Commission to act at a regularly scheduled meeting and still meet the application deadline. Carol Zoff shared information on the letters of intent received by the Department of Transportation and referenced the summary of projects from Great River Road communities she provided for the meeting packet. 10 projects are from Great River Road communities and five of the projects have direct benefit to the byway and byway traveler and help implement the MN Great River Road Corridor Management Plan. The applicant organizations for those projects are Cuyuna Lakes Trail Association, City of Rice, City of Little Falls, City of Red Wing and City of Brainerd. Motion by Karl Samp and seconded by David Kelliher to authorize letters of support for the five projects as recommended. Motion carried.

Lower St. Anthony Falls/Lock & Dam #1 Disposition Study – Scoping Comments: John Anfinson provided a draft letter for Commission consideration, included in the meeting packet. The letter asks that byway intrinsic qualities and the MN-MRPC mission be considered as part of the scoping process for the Lower St. Anthony Falls/Lock & Dam #1 disposition study that will be completed by the U.S. Army Corps of Engineers. A public comment period for this purpose is now open. Members discussed the letter and suggested an addition clarifying that byway intrinsic qualities are defined by the Federal Highway Administration. Motion by Megan Christianson and seconded by Anne Lewis to authorize the letter, as amended, for submittal to the U.S. Army Corps of Engineers. Motion carried.

Other Business: Megan Christianson shared an update from the MRPC Marketing Committee. The National Great River Road website has had a surge in visitors recently. Itineraries are important, popular, and allow people to make them their own. Enewsletter and Facebook likes are also up. The committee is looking into new opportunities for local entities to place digital ads/banners on the National Great River Road platform.

Closing Comments: Sen. Senjem recognized departing members Jennifer Weaver and Sen. Torres Ray. Both shared comments with their fellow members. Sen. Torres Ray encouraged the Commission to consider partnering with the MSP Film Society and local theaters in river communities. Sen. Senjem shared parting comments with the Commission. He chose this group when he was first elected to the Senate and stayed with it for 20 years, not wanting to give it up because of the unique partnerships and nature of the work. David Kelliher thanked the MN-MRPC for coming to Historic Fort Snelling, expressing thanks to outgoing members, and he presented a plaque to outgoing Chair Senjem in honor of his outstanding service. Discussion and good wishes followed.

Next Meeting: 2023 meeting dates have not yet been set.

Adjournment: There being no further business, meeting was adjourned at 4:20 p.m.

Minnesota Mississippi River Parkway Commission (MN-MRPC)

Full Commission

- Comprised of 15 voting members as defined in [Minnesota Statute 161.1419](#), along with staff from agencies (also known as technical members).
- Quorum is achieved by attendance of 8 voting members (50% of members plus one). If vacancies exist on the Commission roster, the number of attendees to achieve quorum will adjust accordingly.
- The Commission meets quarterly at a minimum. Generally each meeting is 2.5 hours in length.
- State Commission meetings are open to the public, to the extent required by Minnesota Statute Chapter 13D, and audiotapes are posted online following the meetings.
- Meeting agendas, packets, minutes and audio are available at <http://www.commissions.leg.state.mn.us/mrpc/mrpc.html>.
- Staffing support provided by MN-MRPC Director, MnDOT Great River Road Program Manager, and Legislative Coordinating Commission.
- The Commission is a member of the ten-state national Mississippi River Parkway Commission.

Executive Committee

- Comprised of five members as authorized by the MN-MRPC. Membership to include the Chair, Vice-Chair and Secretary/Treasurer. Two additional members will be selected by the MN-MRPC. Overall composition of the Executive Committee should include one House or Senate member, one agency representative and one regional representative. Membership term is two years, with the committee membership elected by the MN-MRPC every other spring.
- Quorum is achieved by attendance of 3 voting members.
- Executive Committee meetings are open to the public, to the extent required by Minnesota Statute Chapter 13D, and audiotapes are posted online following the meeting.
- Meeting agendas, packets, minutes and audio are available at <http://www.commissions.leg.state.mn.us/mrpc/mrpc.html>.
- Staffing support provided by MN-MRPC Director, MnDOT Great River Road Program Manager, and Legislative Coordinating Commission.
- Generally meets twice per year (such as at the change of the fiscal year, and prior to the Legislative Session) and as needed between full Commission meetings.
- Maintains Commission membership – appointment/election process, recruitment, orientation. The full Commission elects the at-large member.
- Maintains affiliation with National MRPC including staying current on dues payments, ensuring National Meeting and National Committee representation from MN-MRPC.
- Monitors Corridor Management Plan implementation progress and leverages resource needs.
- Facilitates coordination with House and Senate.

Approved by MN-MRPC
8/11/16

MN-MRPC FY23 Activity Budget

5-10-23

<u>Activity/Item</u>	<u>Total FY 23 Budget</u>	<u>Spent 5-3-23</u>	<u>Pending</u>	<u>Remaining</u>	<u>% Spent</u>
Quarterly Meetings	\$4,000.00	\$242.50		\$3,757.50	6%
Commission Members - other meetings travel & per diem	\$1,000.00	\$213.89		\$786.11	21%
Dues & Memberships (MRPC National Dues, Natl Scenic Byway Foundation)	\$15,000.00	\$150.00	\$15,000.00	-\$150.00	101%
National Meetings	\$12,000.00	\$5,714.31		\$6,285.69	48%
Communications including website hosting, phone, Zoom, Constant Contact, etc.	\$1,400.00	\$962.63	\$25.24	\$412.13	71%
Website General Updates	\$1,200.00	\$765.50	\$150.00	\$284.50	76%
Shipping (including 10-state maps Interpretive Centers)	\$3,000.00	\$95.68	\$51.81	\$2,852.51	5%
General Material Printing & Supplies	\$823.88	\$142.72		\$681.16	17%
Admin Contract	\$38,400.00	\$26,800.00	\$3,200.00	\$8,400.00	78%
Professional-Technical Service including additional staff hours, web services, graphic design services, etc.	\$7,000.00	\$660.00	\$780.00	\$5,560.00	21%
Ambassador Program*	\$5,000.00			\$5,000.00	0%
Access-Welcoming Environment*	\$3,000.00			\$3,000.00	0%
GRR Info/Promotion*	\$3,000.00			\$3,000.00	0%
Total Operating Budget (\$78,000 base + \$16,823.88 carry forward from FY 22)	\$94,823.88	\$35,747.23	\$19,207.05	\$39,869.60	58%
Notes:					
* Some carry forward funds tentatively placed in recent Commission priority areas					



Ten State Mississippi River Parkway Commission Technical Committees

Culture & Heritage Committee - <https://mrpcmembers.com/committee/culture-heritage/>

This committee explores methods to enhance the preservation and highlight cultural/historical aspects of the Mississippi River Valley as well as pursue the interpretation of the cultural/historical resources of the Valley. The committee prepares and submits to the Board of Directors an annual report that identifies accomplishments made related to these objectives.

Environment, Recreation & Agriculture (ERA) Committee – <https://mrpcmembers.com/committee/era/>

The committee addresses issues related to the environment and the agriculture of the Mississippi River Valley and projects that are designed to enhance the recreational opportunities within its boundaries. The committee prepares and submits to the Board of Directors an annual report of the environmental, recreational and agricultural condition of the Mississippi River Valley. The report includes comments on problems encountered and solutions offered which would guarantee compatibility of Parkway development with environmental safeguards.

Marketing Committee - <https://mrpcmembers.com/committee/marketing/>

This committee has primary responsibility for the website, newsletter, and protection of the copyright and printed materials for the organization. The committee also sets policy for materials related to the promotion of the organization, although promotion of actions of other committee will be retained by those committees, under policy set by this committee.

Transportation Committee – <https://mrpcmembers.com/committee/transportation/>

This committee addresses issues relevant to the transportation system within the Mississippi River Valley with special attention to the Great River Road. The committee prepares and submits to the Board of Directors an annual report regarding the status of Great River Road construction and maintenance. The committee has representatives from each member state and it meets at least 4 times per year, including the annual and semi-annual meetings.

National Scenic Byways Grants – Status and Letters of Support

The MN-MRPC provided letters of support for four projects that sought National Scenic Byways grant funding in 2022. Applications were accepted in June 2022 for \$22 million nationwide in funding from the Federal Highway Administration/National Scenic Byways Program. Eligible Applicants: State Departments of Transportation and Tribal Governments in partnership with local project entities as appropriate.

Dakota County – Spring Lake Park Reserve/Fischer Avenue Trailhead - Project Funded

- **No MN-MRPC action requested at this time.**
- Facilities include a parking lot, a bus drop-off lane, a picnic shelter with restrooms, charging stations for electric bicycles and wheelchairs, pedestrian scale lighting, trash/recycling receptacles, benches, wayfinding signage, and interpretive signage. New trails will connect the trailhead to the National Mississippi River Trail and form a one-mile loop around the park's bison herd and range area. All facilities will be ADA accessible. \$700,000 in funding requested, with \$700,000 in local match.

Leech Lake Band of Ojibwe – Cultural Tourism & Interpretive Center - Project Not Funded

- **Requesting an updated letter of support for a future National Scenic Byways Program application, and a general letter of support for future funding sources. Letter provided in 2022 is attached.**
- The proposed project is to construct a Tourism and Interpretative Center along the Avenue of Pines Scenic Byway in the City of S-Lake on land owned by the band. The facility will include public restrooms, event space for cultural events, local tourism information, and an interpretive center that highlights the history of Leech Lake Band of Ojibwe using tribal language. Additional amenities: bicycle parking, EV charging station, picnic areas, and an outdoor trail that incorporates Native American art. Placement of the building is approximately 14 miles from the Great River Road, making it an easy to reach destination for visitors. The Leech Lake Band of Ojibwe requested \$596,321, with \$149,000 in local match.

Leech Lake Band of Ojibwe – Wild Parsnip Removal - Project Not Funded

- **No MN-MRPC action requested at this time.**
- Wild parsnip removal project in partnership with Beltrami County, along Lady Slipper Scenic Byway and Great River Road.

Washington County – Point Douglas Park Trailhead - Project Not Funded

- **Likely to request an updated letter of support for a future National Scenic Byways Program application. May be something for the MN-MRPC to consider now given uncertain timelines. Letter provided in 2022 is attached.**
- This project will 1) construct a new trailhead and recreational facility that includes a visitor lobby area, restrooms, and recreational amenities, 2) reconfigure the parking lot for safety, accessibility, and stormwater management, and 3) conduct site improvements, including interpretative signage, landscaping, trail connections, and bike parking. \$1.2 million requested, with \$800,000 in local match.

General Letter of Support Requests

Cuyuna Lakes Trail Association – Brainerd to Riverton Trail Project

- **Letter of support from the MN-MRPC requested** as the association seeks funding for the Brainerd to Riverton Trail Project. A letter provided at this time would be general in nature and not specific to a bonding request. Details attached.

City of Sartell – Park & Trail Enhancements

- **Letter of support from the MN-MRPC requested.** The City of Sartell will be acquiring the former Paper Mill property on the east side of Sartell. The Paper Mill property is located along the Mississippi River west of Benton Drive. The city is seeking grant funding to complete trail and park enhancements along the Mississippi River. Details attached.

Updated letter requested



Minnesota Mississippi River Parkway Commission

56 33rd Avenue South, #283 • St. Cloud, Minnesota 56301
651-341-4196 • info@MnMississippiRiver.com

Members of the House: Emma Greenman (D-63B); Kristin Robbins (R-34A) **Members of the Senate:** David Senjem (R-25); Patricia Torres Ray (DFL-63) **State Agency Appointees:** Paul Hugunin – Agriculture, Marni Karnowski – Transportation, Lisa Havelka – Explore Minnesota Tourism, Grant Wilson – Natural Resources, David Kelliher – Historical Society **Regional Appointees:** Sally Fineday – Lake Itasca to Grand Rapids, Megan Christianson – Grand Rapids to Brainerd, Karl Samp – Brainerd to Elk River, John Anfinson – Elk River to Hastings, Jennifer Weaver – Hastings to Iowa Border **Member at Large:** Anne Lewis

June 3, 2022

Bryan McCoy, Tribal Planner
Leech Lake Band of Ojibwe
Cass Lake, MN 56633

Re: Letter of Support – Tourism and Interpretive Center Project

Dear Mr. McCoy:

The Minnesota Mississippi River Parkway Commission (MN-MRPC) supports the Leech Lake Band of Ojibwe's National Scenic Byways funding request for construction of a Tourism and Interpretive Center. The project aligns with the mission and Corridor Management Plan of the MN-MRPC, byway organization of the Minnesota Great River Road All-American Road/National Scenic Byway.

The MN-MRPC is a statutory commission whose mission is to promote, preserve and enhance the resources of the Mississippi River Valley and to develop the highways and amenities of the Great River Road. This project will help implement the Minnesota Great River Road Corridor Management Plan by encouraging tourism that sustains or enhances the character of the Mississippi River and partners with tribal nations for sharing of culture. The history of the Leech Lake Band of Ojibwe and its connections to the Mississippi River are rich and significant. This center would be a tremendous asset for the Great River Road, easily accessed just a few miles off the route, and would provide an important and unique experience for byway travelers. We appreciate the background work already completed by the Leech Lake Band of Ojibwe and the partnership with the Avenue of Pines Scenic Byway on this project.

We look forward to the implementation of this project and the opportunities it will provide for visitors and residents alike. If you have questions about our support or if there is additional information we can provide, please contact the MN-MRPC office at 651-341-4196.

Sincerely,

A handwritten signature in black ink that reads "D. Senjem".

Sen. David Senjem, Chair

Updated letter requested



Minnesota Mississippi River Parkway Commission

56 33rd Avenue South, #283 • St. Cloud, Minnesota 56301

651-341-4196 • info@MnMississippiRiver.com

Members of the House: Emma Greenman (D-63B); Kristin Robbins (R-34A) **Members of the Senate:** David Senjem (R-25); Patricia Torres Ray (DFL-63) **State Agency Appointees:** Paul Hugunin – Agriculture, Marni Karnowski – Transportation, Lisa Havelka – Explore Minnesota Tourism, Grant Wilson – Natural Resources, David Kelliher – Historical Society **Regional Appointees:** Sally Fineday – Lake Itasca to Grand Rapids, Megan Christianson – Grand Rapids to Brainerd, Karl Samp – Brainerd to Elk River, John Anfinson – Elk River to Hastings, Jennifer Weaver – Hastings to Iowa Border **Member at Large:** Anne Lewis

May 24, 2022

Holly Slagle
Statewide Scenic Byway Coordinator/Project Management
Minnesota Department of Transportation
395 John Ireland Blvd., MS 620
St. Paul, MN 55155

Re: Letter of Support – Washington County Point Douglas Park Trailhead Project

Dear Ms. Slagle:

The Minnesota Mississippi River Parkway Commission (MN-MRPC) supports the Minnesota Department of Transportation and Washington County as National Scenic Byway Funding is sought for the Point Douglas Park Trailhead Project along the Great River Road. The project aligns with the mission and Corridor Management Plan of the MN-MRPC, byway organization of the Minnesota Great River Road All-American Road/National Scenic Byway. The MN-MRPC is a statutory commission whose mission is to promote, preserve and enhance the resources of the Mississippi River Valley and to develop the highways and amenities of the Great River Road.

Point Douglas is a scenic, recreational, and historic park that resides not only at the confluence of the Mississippi and St. Croix Rivers, but also at the confluence of two National Parks and two scenic byways. While the park currently serves visitors of the Great River Road with a popular beach, scenic views, picnic areas, and connections to Point Douglas Regional Trail, its restroom facilities and parking lot have exceeded their useful life, no longer meet minimum standards, and are not resilient to river flooding. This project will address these issues by 1) constructing a new trailhead and recreational facility that includes a visitor lobby area, restrooms, and recreational amenities, 2) reconfiguring the parking lot for safety, accessibility, and stormwater management, and 3) conducting site improvements, including interpretive signage, landscaping, trail connections, and bike parking.

This project advances objectives laid out in the MN Great River Road Corridor Management Plan related to byway investments that honor the Mississippi River corridor; promotion of active river exploration including bicycling, walking, hiking, and boating; providing integrated multimodal travel options; and engaging diverse populations of all ages to experience the Mississippi River.

We look forward to the implementation of this project and the experience it will provide for byway travelers and residents alike. If you have questions about our support or if there is additional information we can provide, please contact the MN-MRPC office at 651-341-4196.

Sincerely,

Handwritten signature of David Senjem in black ink.

Sen. David Senjem, Chair



February 2, 2023

Dear Business and Organization Leaders,

The Cuyuna Lakes State Trail Volunteer Association is asking for letters of support from organizations and businesses such as yourself. This is an important step in the approval process to proceed with plans to complete the trail. We hope that you will take the time to write a letter of support for the trail construction and we have provided a suggested text below if you should choose to use it.

An Overview of information to know.

The Cuyuna Lakes State Trail expansion would connect the existing 9-mile paved section of the Cuyuna Lakes State Trail from Riverton to Brainerd. The trail currently runs from Riverton to Deerwood, passing through Crosby-Ironton along the way. The new segment of trail would be asphalt paved construction and would be for non-motorized recreational use (biking, walking, running, cross country skiing, snowshoeing, etc.). The new portion that we are seeking to build would pass through portions of the Cuyuna Country State Recreation Area and undeveloped Crow Wing County land. A large portion of this public land known at the Mississippi River Northwoods sits between HWY 210 and the Mississippi River was purchased through the MN Outdoor Heritage Fund to protect it from private development and turned over to Crow Wing County to manage several years ago. The dirt trails that currently exist on the property are already approved and used for snowmobile and seasonal ATV use managed by Crow Wing County.

Our plan is to create a new non motorized paved trail corridor with three objectives:

1. We would like to create a new corridor to make sure that we do not displace any current trail users and their existing rights to the trails that already exist.
2. We would like to make this beautiful land more accessible to area residents who prefer a non motorized experience.
3. We would like to have this new trail be as friendly to the environment as possible which is why there will be an extensive process of route planning and environmental approvals to make sure the trail has a minimal impact on the environment while providing more opportunity for residents to enjoy its beauty.

Our hope is that the funding for this project will come from multiple sources with the bulk of the money coming from State of Minnesota bonding if approved. We hope that you will give us your support by submitting a letter as outlined below.

Thank you for your time and support!

The Cuyuna Lakes State Trail Association

Contact Information To Send Letters Of Support

Please send your letters of support to **CLTA, P.O. Box 908, Brainerd, MN 56401**

Be sure to sign the letter and include the name and address of your business or organization on business letterhead if available.

Suggested Letter Of Support (please use business letterhead, if available)

Date

Dear Crow Wing County and MN Legislators,

We fully support the development of the Cuyuna Lakes State Trail from Riverton to Brainerd. We understand the care that is being taken to have an environmentally friendly route planned and approved and the intent as well to not exclude other user groups from the land. We also support the trail for its recreational opportunities that it will bring to our region not only for the benefit of local residents and businesses, but also as a means of continuing to make the Brainerd and Cuyuna Lakes Regions a draw to tourists year-round.

We know that recreational trails such as this create a healthier community physically, emotionally, and financially and is a wise economic investment in our region.

Thank you,

Name

Business or Organization

Address

City of Sartell Request for Letter of Support

The City of Sartell will be acquiring the former Paper Mill property on the east side of Sartell. The Paper Mill property is located along the Mississippi River west of Benton Drive. The city is seeking grant funding to complete trail and park enhancements along the Mississippi River.

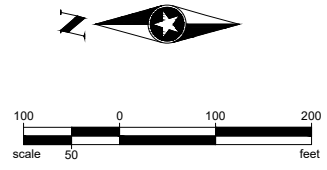
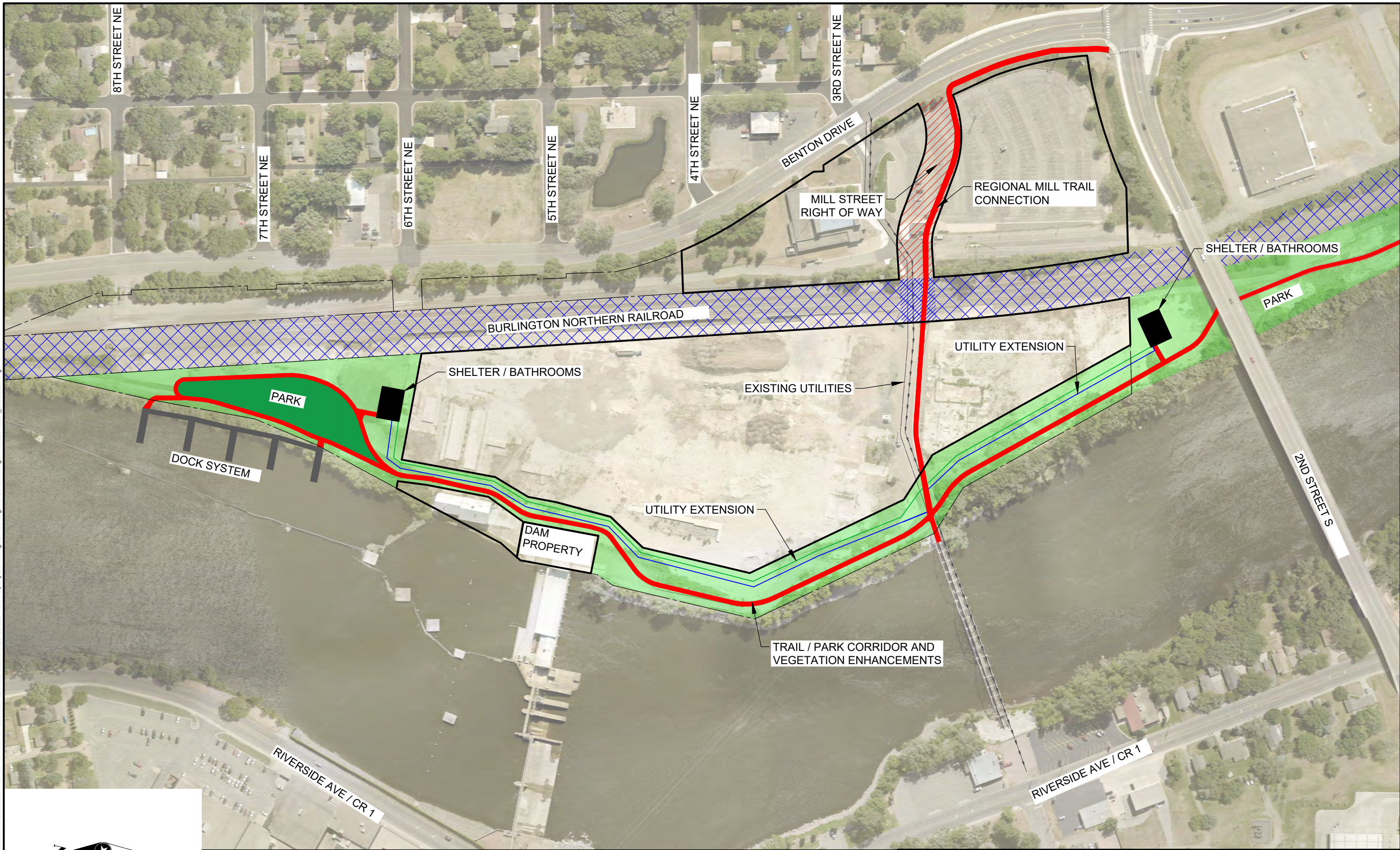
The project desires include trail connections to and along the Mississippi River, design and construction of a green trail/park corridor, berm screening, parkway, boardwalk, docks, shelter/gazebo, utility extensions, bathrooms, vegetation enhancements, and other park amenities. Our main goal is to enhance this property for community members and visitors to embrace the Mississippi River in Sartell. With the opening of the pedestrian bridge, we would love to have a loop from County Road 1 – over the bridge – to these new trails along the river on the former Mill Site.

We will be applying for multiple different grant opportunities.

Project Contact: Anna Gruber, City Administrator

Map of project area attached.

Save: 3/20/2023 1:44 PM I:\land Plot: 3/20/2023 1:45 PM P:\PT\S\SART\EScommon\General Numbers\G0132 2021 AIM Property\5-final-dsgn\5-1-drawings\10-Civil\cat\dwg\exhibit\G0132EX_2023.3.20.dwg



- EXISTING RAILROAD RIGHT OF WAY
- RAILROAD CROSSING
- TRAIL / PARK CORRIDOR AND VEGETATION ENHANCEMENTS
- TRAIL

	PROJECT NO. G0132	TRAIL AND PARK IMPROVEMENTS SARTELL, MINNESOTA	FIGURE NO. 1
	DATE: 3/20/2023		



Member Update to MN Mississippi River Parkway Commission

Commissioner: Anne Lewis

Representing: At-Large

Quarter: 1st Quarter 2023

Minnesota

State-wide Issue, Project, Event or Partner

- Met with other members of the MN-MRPC Executive Committee in January

Regional

MN Great River Road Corridor Management Plan Implementation Support

Reviewed Minnesota’s Ambassador program MRPC recently introduced member-support program with the same name. Drafted MN response to MRPC Board requesting a change of name to avoid confusion and to protect Minnesota’s Ambassador program specified in our Corridor Management Plan and partially funded through the legislature.

Regional Issue, Project, Event or Partner

MRPC – Ten-State

Ten-state Corridor Management Plan Implementation Support

Attended 10-state board meetings and webinars. Also attended an MRPC committee meeting.

Ten-State Issue, Project, Event or Partner