
Mississippi River Parkway Commission of Minnesota


Metro Region (Elk River to Hastings)

October 27, 2016 • 2:00 – 3:30 p.m.

Historic Fort Snelling

200 Tower Avenue, St. Paul, MN

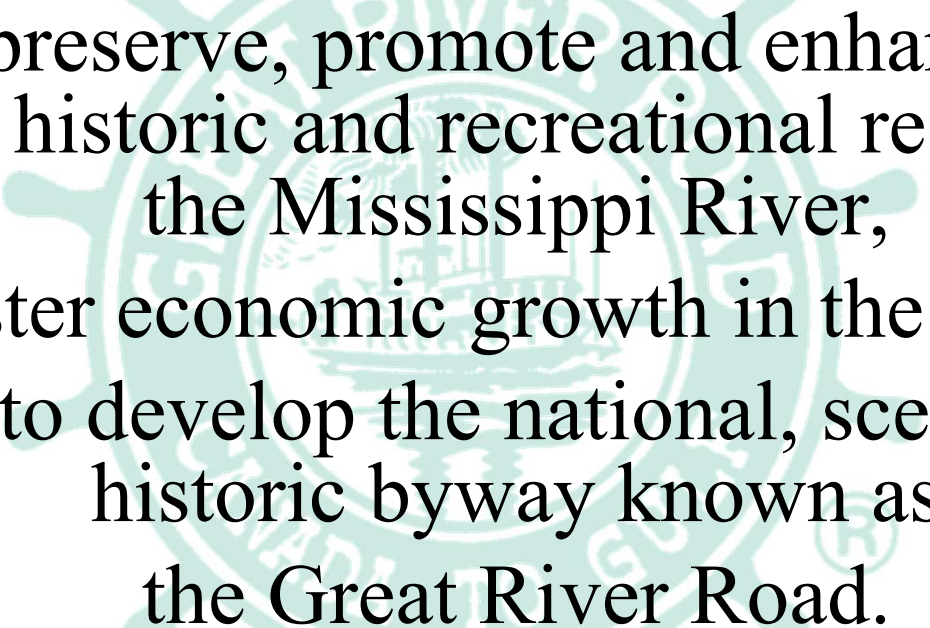
Metro Region Agenda

- 
- I. Welcome & Introductions
 - II. Minnesota Great River Road Updates
 - III. Ten State Great River Road Projects
 - IV. Regional Commissioner Election
 - V. Regional Work
 - IV. Ideas & Updates from Participants
-

Welcome & Introductions



Commission's Mission:



To preserve, promote and enhance the scenic, historic and recreational resources of the Mississippi River, to foster economic growth in the corridor and to develop the national, scenic and historic byway known as the Great River Road.

Minnesota Great River Road Updates

- Corridor Management Planning Results
- Corridor Management Plan Implementation
 - Wayfinding Signage
 - Plan Your Project
 - Plan Your Trip
 - Ambassador Development

Corridor Management Planning Results

Top Themes:

Nature

Recreational Activities

Top Areas of Focus:

Health and Active Living

Facilities Management

Placemaking

215
RIVER
STORIES

20 KEY
STAKEHOLDER
MEETINGS

87 VISITOR
SURVEYS

16 PROJECT
MANAGEMENT
TEAM MEETINGS

MN-MRPC
MEETINGS **6**

ADVISORY
TEAM
MEETINGS **7**

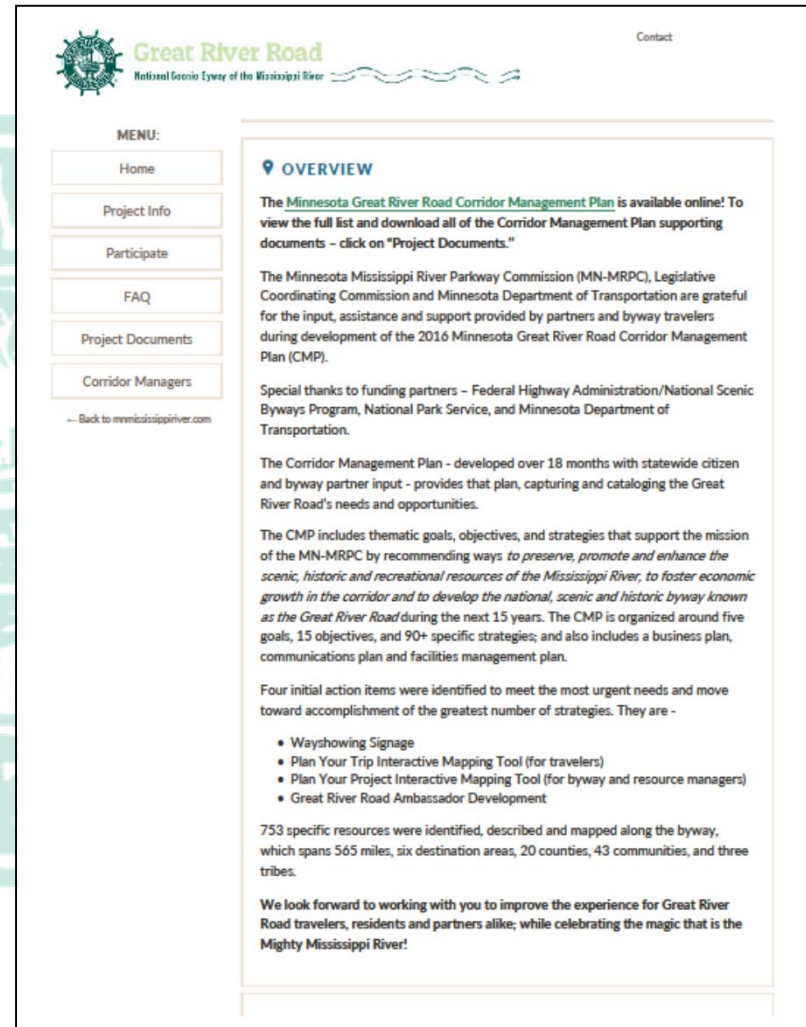
SOCIAL
MEDIA
PLATFORMS **4**

132 PARTICIPANTS
12
PUBLIC OPEN
HOUSES

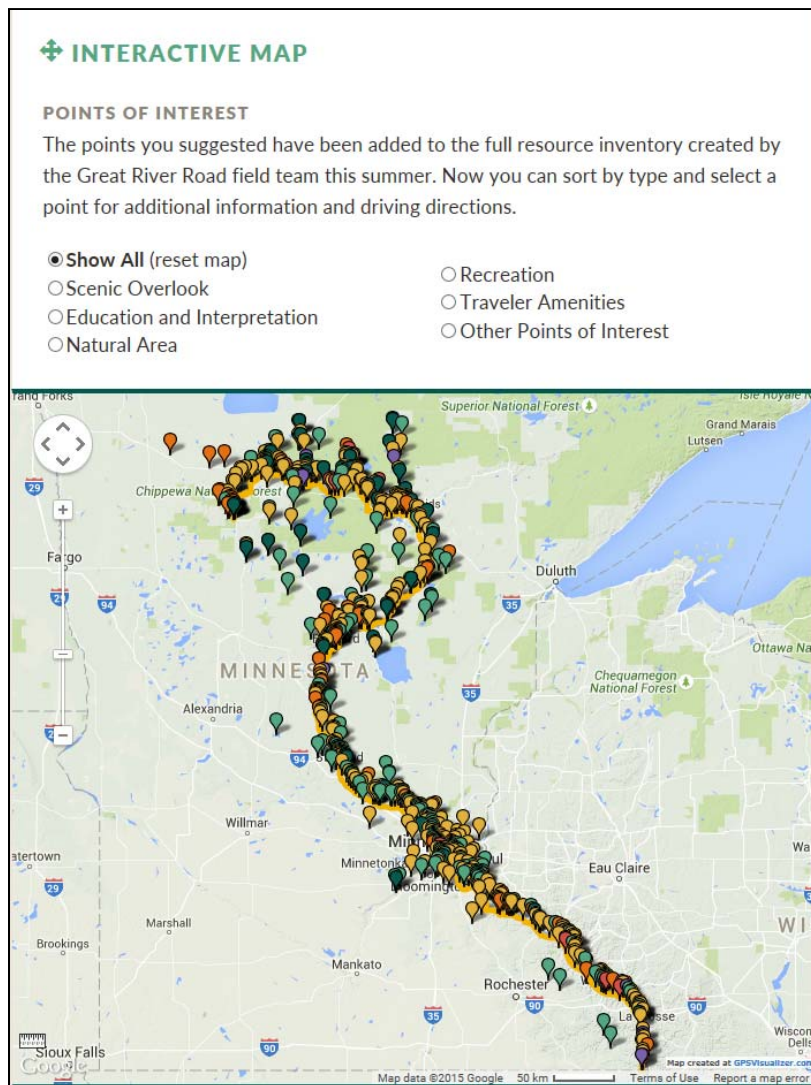
543 Specific #cantmiss locations

99 RIVER VIEWS IDENTIFIED **533** Online Survey Participants Aged 19-65+

Corridor Management Planning Results



Corridor Management Planning Results



Corridor Management Planning Results



SIGNIFICANT VIEWSHED OR VISTA		VISUAL PROTECTION PLAN	
Assessment Form		Control Number (From Submittal) <input type="text"/>	
General:		View Direction/Compass Bearing <input type="text"/>	
View <input type="text"/>		Primary Modal Accessibility <input type="text"/> Parking Available <input type="checkbox"/>	
Location or Address <input type="text"/>		Primary Modal Accessibility <input type="text"/> ADA Accessible <input type="checkbox"/>	
City <input type="text"/> County <input type="text"/>		Landowner/Managing Agency:	
GPS Coordinates <input type="text"/>		Landowner <input type="text"/> Managing Agency <input type="text"/>	
Anything Else? <input type="text"/>			
Assessment:		Landform/Cover <input type="text"/>	
View Type <input type="text"/>		Landform/Cover <input type="text"/>	
Landscape Type <input type="text"/>		Land Use (Zoning/Type) <input type="text"/>	
Landscape Type <input type="text"/>		Land Use (Zoning/Type) <input type="text"/>	
Scenic Quality Rating (1-5, 5 being best) <input type="text"/>			
Suitability for GRR Viewpoint (1-5, 5 being most suited) <input type="text"/>			
Threat Level (0-5, 0 being no threat) <input type="text"/>			
Discuss how any threats might be mitigated, or any infrastructure needs to develop vistas as by byways viewpoint/overlook <input type="text"/>			
Other Notes: Best season, environment details (background noise, site details), sensory experience, wildlife, etc. <input type="text"/>			
Your Information (Optional):		Submit by Email <input type="button" value="Submit by Email"/>	
Submitted by <input type="text"/>		Or, mail to: MPRC MPRC Mailing Address Address, AD	
Email <input type="text"/>			
Date <input type="text"/>			
GREAT RIVER ROAD Corridor Management Plan			

Corridor Management Planning Results

Great River Road Visitor Survey Results Overview



of respondents were aware they were traveling on the Great River Road

Most respondents were traveling by car and 20% were traveling by bicycle



25 percent of respondents were over the age of 50



27 percent were under 18



75% of respondents visited or plan to visit the Headwaters of the Mississippi River

The top three activities in terms of enjoyment included:

- 1 Touring by car
- 2 Headwaters/Itasca State Park
- 3 Hiking



75% of respondents were visiting friends and family or were vacationing

Many respondents would like to see more and better signs indicating they are on the Great River Road

Many listed getting lost as a least favorite activity or a need for improvement



of respondents definitely will or probably would plan to visit again

Most travelers learned about the Great River Road from:

- 1 The website
- 2 Existing local knowledge
- 3 Friends/family
- 4 Brochures
- 5 Wayshowing signs

Corridor Management Planning Results



Itasca State Park

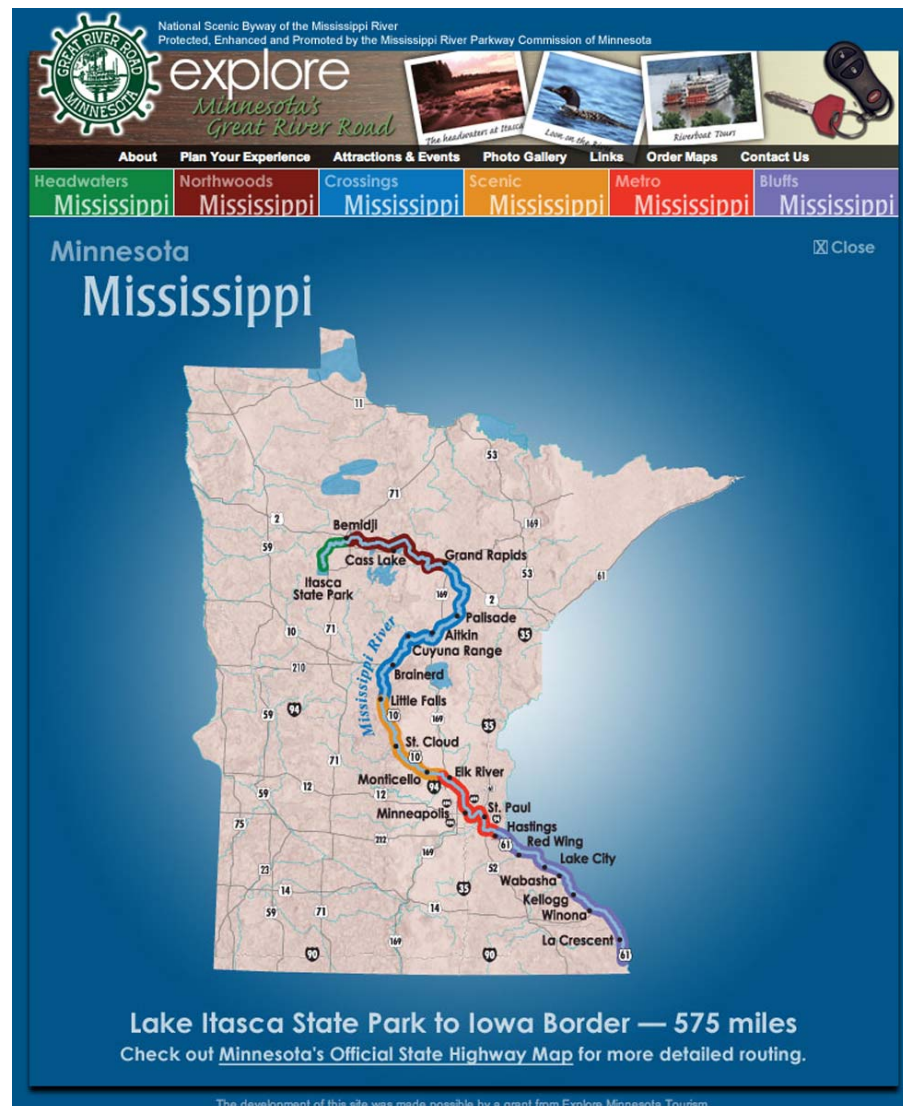


Rock Island Bridge, moved to near Pine Bend SNA



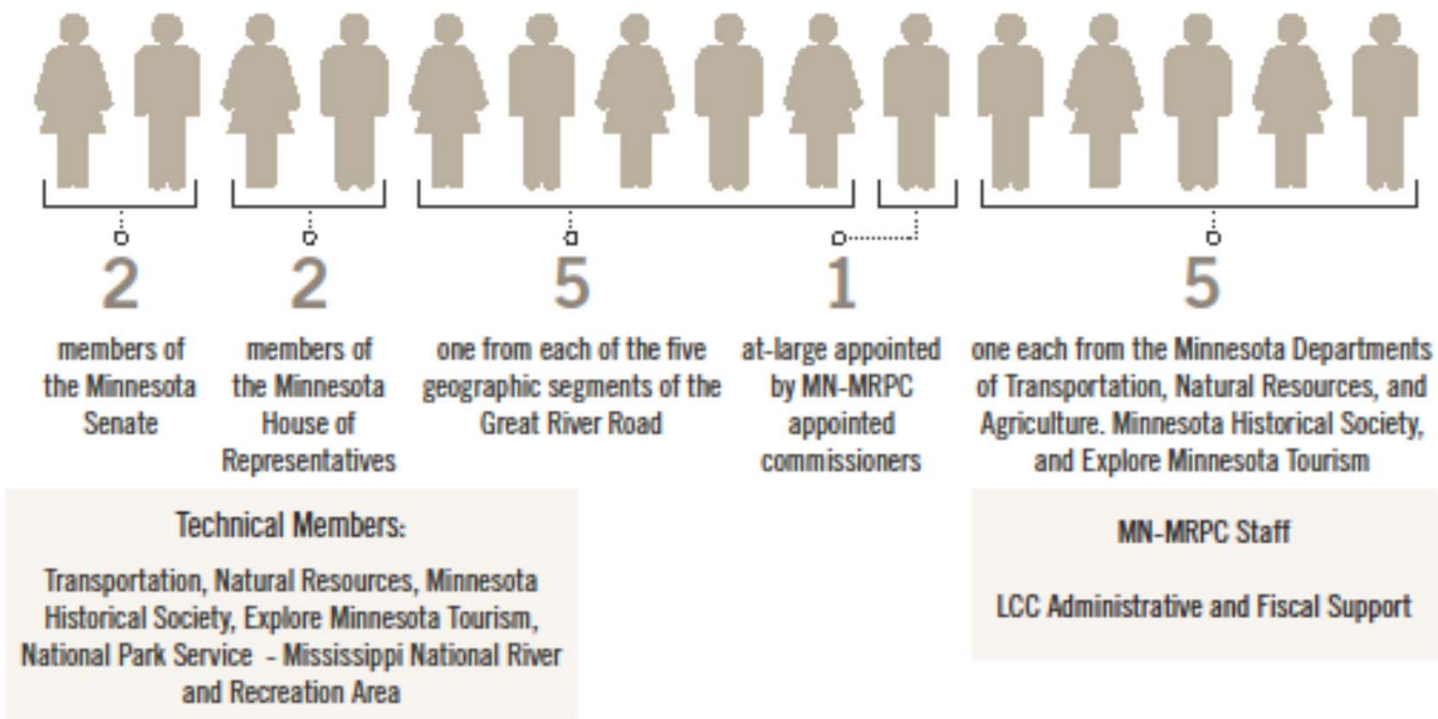
TH 13 in Mendota

Corridor Management Planning Results



Corridor Management Planning Results

Minnesota Mississippi River Parkway Commission Organization Chart



Corridor Management Planning Results



Corridor Management Planning Results

Online at www.mississippitrailriver.com

Ramsey, a Mississippi River Trail Community

Named for Minnesota's first territorial governor, Alexander Ramsey, this dynamic city embraces the value of its natural resources. Half of the city borders the Mississippi and Run Rivers, and more than 15 percent of the land is protected wetlands. Several hundred acres of parks, greenways and public open space offer numerous opportunities for recreation, while supporting water conservation and enhancing wildlife habitat.

River Facts

The 72-mile Mississippi National River and Recreation Area begins at the confluence of the Crow River in Ramsey/Dapkin in the north and flows to the confluence with the St. Croix River south of Hastings. This makes Ramsey a northern gateway to this national park, the MRT and the Metro Mississippi Great River Road Destination Area. *Enrich your National Park exploration at the Mississippi River Visitor Center located at 120 W. Kellogg Blvd in St. Paul. 32 miles southeast.*

Did you know?

The wild and scenic Run River, flowing Ramsey on the east, was well known to the Dakota people who called it Wąȝa wąȝan or "Spirit River." While they revered the stream as the "Great or mystical spirit," European settlers translated the sentiment as alcohol and called the rum-colored stream, the Run River. The River flows 150 miles south from Miles Lake to enter the Mississippi 5.5 miles southeast and was an important fur trade route in the 17th and 18th centuries. By the late 19th century, the River carried millions of logs to sawmills in the Twin Cities, providing lumber for buildings, flour mills, barrels, and railroad ties.

The City of Ramsey

Attractions

- Mississippi National River and Recreation Area
- Mississippi River National Park
- Other H. Kelsey Farm
- Run River Regional Trail
- Isles County History Center
- West Brook Greenway
- Run River Regional Regional Park
- The Shrine
- WHDOT Wildlife State Area

Biking on the Mississippi River Trail (MRT)

Cyber riding the MRT in Ramsey

- Ramsey residents frequently use the MRT to explore their community and the area. The MRT offers a safe, scenic route for cyclists to explore the area. It is a great way to enjoy the outdoors and the scenic views of the Mississippi River.

Route Profile

- The MRT was constructed for recreational use. It is not designed for commercial use. It is a great way to enjoy the outdoors and the scenic views of the Mississippi River.

- The off-road segments of the MRT are generally suitable for bicycles of all types.
- As of 2013, on December 1, 2013, the MRT was open to all types of bicycles.

Basic Equipment

- The Minnesota trail network offers a wide variety of trails for all types of bicycles.
- Always carry your equipment, such as drinking water, snacks, and a first aid kit.
- Most trails are well maintained and offer a great way to enjoy the outdoors.

For more information, visit www.mississippitrailriver.com or call 1-800-456-7890.

Online at www.mnmississippiriver.com

Metro Mississippi

Local Playground, Continental River

The Mississippi National River and Recreation Area is a 72-mile river park that has opportunities for fishing, boating, and canoeing. On its banks are excellent locations for birding, bicycling, and hiking. Although annually millions of people from around the globe come to see the Mississippi River, they are not the only visitors—40 percent of all North American waterfowl use the river as a migratory flyway, and 326 bird species (more than one-third of all species in North America) follow the flyway in their spring and fall migrations.

In Between Twin Cities

While St. Paul was developing around shipping and transportation, Minneapolis, with its lumber and flour mills fueled by St. Anthony Falls, became an industrial giant. The social differences and the destruction of the two cities were firmly established by the mid-19th century. Today, you can discover the unique and diverse cultural and recreational opportunities that Minnesota's two largest and most vibrant urban communities offer.

John H. Stevens Interpretive House

Historic Fort Snelling

- **Headings serves as a** host community for two Destination Area: Metro Mississippi and Mississippi Delta.
- **In Metro Mississippi,** abundant trails and trails will connect you to interesting events and events in the Twin Cities including world-class theaters, major and minor league sports, modern and classic museums, a wide range of concepts, dining and shopping.

St. Anthony Falls

- **Discover the Falls of St. Anthony in Minneapolis,** the second largest potential source of water power after Niagara Falls in the continental United States.

Lock and Dam No. 1

- **Natural sights inevitably** make navigating the Mississippi River to Minnesota nearly impossible. The navigation of locks and dams along the river makes this a feasible option.

Explore the Great River Road and the

For more information, visit www.mnmississippiriver.com

▼ Destination Area: Metro Mississippi

Hastings, a Mississippi River Trail Community

Originally called **Oliver's Grave** after an early trading post, Hastings was established after the 1851 Mendota Treaty opened the area to white settlement. Hydropower from the falls of the Vermillion River was harnessed for an early mill that processed grain from the rich surrounding farmlands. Hastings became the Dakota County seat in 1857 and served as both a significant riverboat port as well as a regional railroad center in the 1870s and 1880s. The city's historic downtown area reflects its commercial importance.

River Facts

The Hastings area lies near the upper boundary of the "Driftless Area," a section of the Mississippi River Valley untouched by the river's ancient glaciers of the late Pleistocene Epoch. The dramatic bluffs along the river extending downstream into Iowa were carved not by glaciers, but by the river itself. The Mississippi National River and Recreation Area begins at the confluence of the Crow River in Ramsey/Dayton in the north and flows to the confluence with the St. Croix River south of Hastings. This makes Hastings a southern gateway to this National Park, the MNT, and the Meigs Mississippi Great River Road destination area.

Enrich your National Park exploration at the **Mississippi River Visitor Center** at 120 W. Kellogg Blvd in St. Paul, 21 miles northwest.

Did you know?

Hastings was long known for its "spiral bridge" which was built in 1895 and remained in service until 1951. The spiral or helix at the south end enabled traffic to descend directly into the downtown area. The main span of the present bridge, which opened in June 2013, is the largest free-standing arch bridge in North America.

▼ The City of Hastings

Attractions

- Historic Walking, Bicycling, and Driving Tour
- Vermillion Falls Park
- Lusk and Dam No. 2
- Lutheran Historic Estate
- Poult Point-Dakota Park
- Leif Erickson Park
- C.P. Adams Park
- Old Mill Park
- Wilderness Concepts

Biking on the Mississippi River Trail (MRT)

Hastings welcomes bicyclists to explore their community and the river. The MRT offers spectacular views of nature and scenic views of the river for as little as \$100 a year or less as well as bike racks and restrooms at the Hastings area of the Mississippi River.

Route Profile

- The MRT has something for everyone within Minnesota—old rail segments are appropriate for all types of users.
- The proposed segments are suitable for experienced bicyclists, offering scenic views of the river and its surroundings.
- The off-road segments and trails and trails are generally suitable for novices and for all types of users.
- As of 2005, all Minnesota cities, towns, and villages and all Minnesota counties have a designated segment of the MRT.

Basic Equipment

- The Minnesota MRT travels through urban and rural settings.
- Always carry necessities, such as drinking water, tools, pump, and proper clothing.
- Most bicycles will work, but for the best of the entire length of the MRT, however, mountain bikes and full frame bicycles are the best choice.

Notes for the Great River Road and the Mississippi River Trail

The Great River Road and the Mississippi River Trail are both part of the same system, offering scenic views of the river and its surroundings.

MRT Host Communities: Bemidji, Brainerd, Little Falls, Ramsey, Hastings, Lake City & Winona

Initial Implementation Focus

- 
1. Wayfinding Signage
 2. Plan Your Project
 3. Plan Your Trip
 4. Ambassador Development

Wayfinding Signage

- A total of 135 Great River Road wayfinding signs, or 22%, were noted as missing



Wayfinding Signage

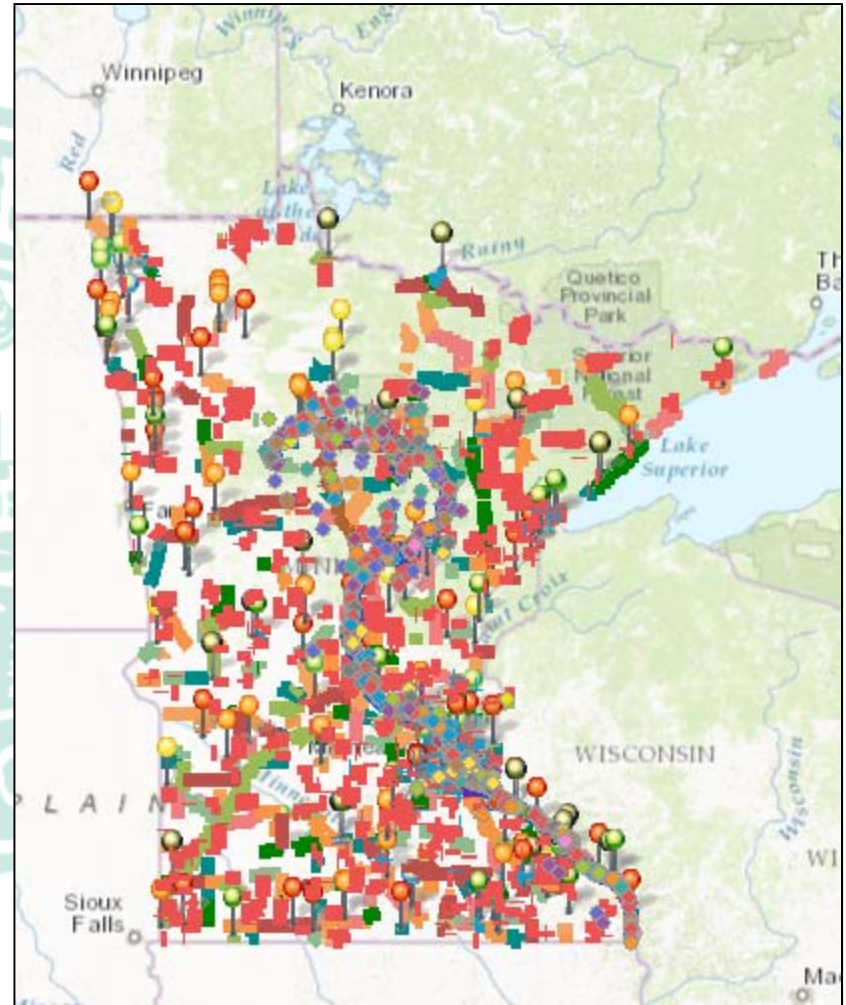
Where signs are in place, 32% of the time they do not follow the Manual On Uniform Traffic Control Devices (MUTCD)

- Variations in size, colors, and wording
- Inconsistent sign assembly on poles
- Inconsistent type of arrow
- Missing the arrow
- Faded or otherwise beyond its useful life



Plan Your Project

- ☐ Great River Road Route
- ☐ MRT Route
- ☐ Traveler Resource Database
- ☐ Great River Road Sign Inventory
- ☐ SALT Database (County, City, Other)
- ☐ Programmed Bridge Projects 2015 -2018
- ☐ Programmed Projects 2015 -2018
- ☐ Planned Bridge Projects 2019 - 2022
- ☐ Planned Projects 2019 – 2022
- ☐ Scenic Easements and Areas
- ☐ Multi-modal connections
- ☐ Permitted billboards



Plan Your Trip

☐ Traveler Resource Database

- Boat Access
- Museum
- Campground & Water Trail Campsite
- Trailhead
- Bridge
- Dam
- Rest Area
- Tourist Information Center
- Scientific and Natural Area
- Interpretive Marker
- Federal, State, County & Local Park
- Federal, State, County & Local Forest
- Scenic Overlook
- Wildlife Area
- Fishing Pier
- Recreation Area
- Other Byways
- Historic Site
- Picnic Area
- Public Art
- Visitor Center
- Native American Site
- Tribal Lands

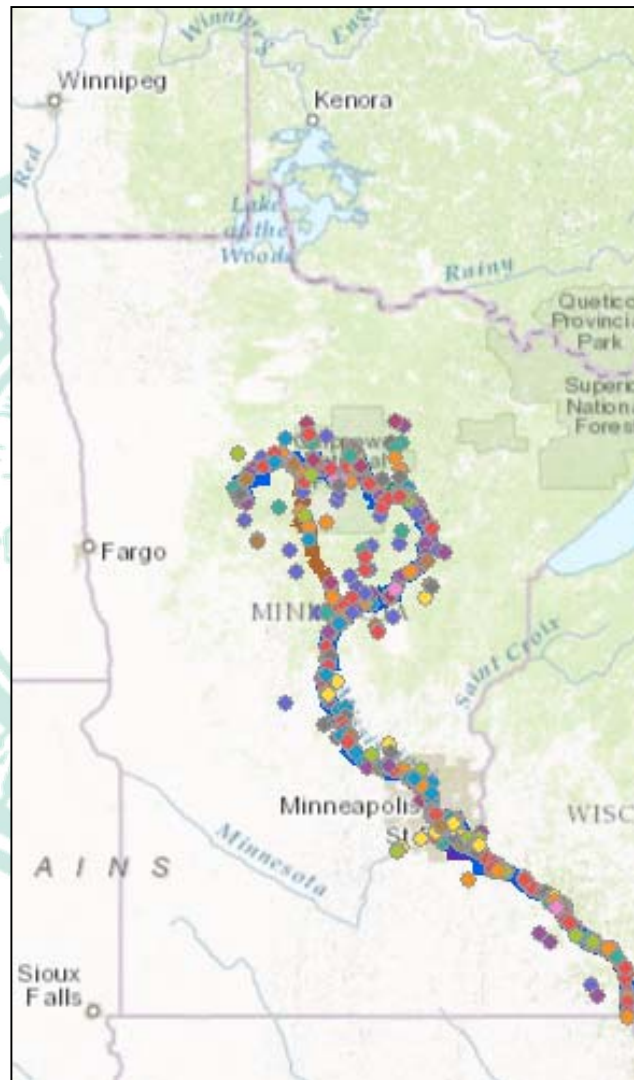
☐ Great River Road Route

☐ MRT Route

☐ Electric Vehicle Charging Stations

☐ MnGrown Members

☐ Multimodal Hub



Metro

Historic Fort Snelling Museum
200 Tower Avenue, Saint Paul, Minnesota
55111

[Website](#)

Relive the early days of Minnesota and learn the crucial role played by a frontier post with a visit to Fort Snelling Historic Site. Originally named Fort St. Anthony, the post was reconstructed in 1820-25 by the 5th Infantry Regiment under Col. Josiah Snelling and, upon its completion, was named in honor of the colonel. The frontier post was built to restrict commercial use of the Minnesota ...and Mississippi rivers from foreign rivals, and its garrison tried unsuccessfully to keep the peace between the Dakota and the advancing Ojibwe. In 1858, the Twin Cities had been developed and there was no longer the need for the fort, so the Army sold Fort Snelling to entrepreneur Franklin Steele in 1858 for \$90,000. During the Civil War, Steele leased the decommissioned fort back to the ArmyDuring the Dakota War of 1862, its grounds housed a concentration camp for hundreds of Dakota women, children and elders... During World War II, it was a base for the Military Intelligence Language School, and was finally decommissioned for good in 1946. It is now an interpretive site administered by the Minnesota Historical Society. ...

Attachments:

10694 - 239 - Photo1.jpg

[Zoom to](#)

[Get Directions](#)

Ambassador Development

- Developing a Great River Road Ambassador program will educate tourism agencies, local hospitality-related businesses, local officials, and river enthusiasts about the unique characteristics and needs of byway tourists as well as to better leverage the economic benefits associated with the Great River Road.
- It will include driving and biking the Great River Road with state and local transportation staff so they better understand opportunities to manage the byway as a parkway to better serve byway traveler needs.

Ten State Great River Road Projects

- Fall **Drive the Great River Road** promotion
- Other 2016 Contests – Birding and Biking
- Great River Road Mobile App
- Great River Road Ten-state Printed Map
- Ten-State Corridor Management Plan
- Mississippi River Connections Collaborative Partnership
 - 2016 Year of Birding
 - 2017 Year of Hiking
 - Geotourism - <http://mississippiriver.natgeotourism.com/>
 - Launch
 - Contributor recognition



Regional Commissioner Election

MN-MRPC COMMISSIONER RESPONSIBILITIES

- Enact the MN-MRPC mission at National, State and local levels.
- Participate in four Minnesota meetings of the MN-MRPC annually.
- Participate in bi-annual National Mississippi River Parkway Commission meetings and serve on National Standing Committees.
- Actively support special events related to the Mississippi River and/or Great River Road.

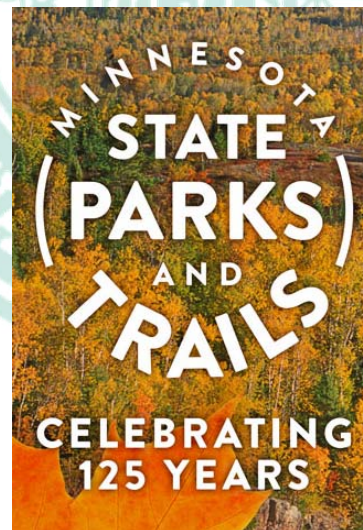
IN ADDITION, REGIONAL COMMISSIONER'S RESPONSIBILITIES ARE:

- Enable their Citizen Committee and regional stakeholders to maximize the benefits of the Great River Road.
- Act as link between the MRPC/MN-MRPC and the regional Great River Road citizen committee.
- Foster partnerships and cooperation within the region, harnessing local resources to implement the mission.
- Coordinate meetings and lead implementation of work by their Regional Citizen Committee.

Regional Commissioner Election

- **According to statute, the MN-MRPC includes five Regional Commissioners elected by citizen committees within those regions.**
- **A Commissioner will be elected today for a two year term.**
- **Ballots will now be distributed...**

Regional Updates

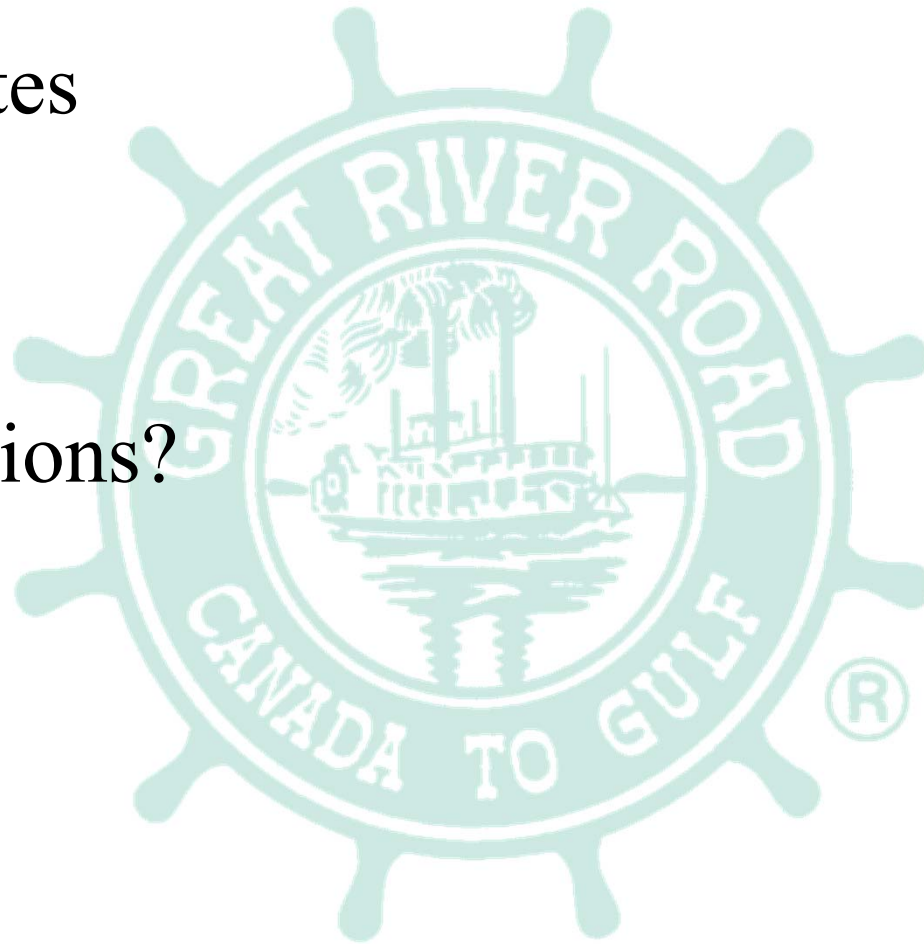


Mississippi River Critical Area



From the Group...

- Updates
- Ideas
- Input
- Questions?



Thank You!

Minnesota Mississippi River Parkway Commission

300 33rd Avenue South – Suite 101

Waite Park, MN 56387

651-341-4196

info@mn.mississippiriver.com

www.mnmississippiriver.com

Special thanks to Historic Fort Snelling for hosting
today's meeting!

